

Active Recombinant Human ACE2, Fc-tagged

Cat. No. ACE2-68H Lot. No. (See product label)

SPECIFICATION

Product Overview	Active Recombinant Human ACE2(Q9BYF1-1)(Gln18-Ser740) is expressed from HEK293 with hFc (IgG1) tag at the C-Terminus.
Species	Human
Source	HEK293
ProteinLength	18-740 aa
Form	Lyophilized from 0.22µm filtered solution in PBS (pH 7.4).
Bio-activity	Immobilized SARS-COV-2 Spike S (Omicron B.1.1.529) Trimer, His Tag at 2µg/ml (100µl/well) on the plate. Dose response curve for Human ACE2, hFc Tag with the EC50 of 22.9ng/ml determined by ELISA.
Molecular Mass	The protein has a predicted MW of 109.2 kDa. Due to glycosylation, the protein migrates to 115-130 kDa based on Bis-Tris PAGE result.
Endotoxin	Less than 1 EU per µg by the LAL method.
Purity	> 95% as determined by Bis-Tris PAGE > 95% as determined by HPLC
Storage	-20 to -80°C for 12 months as supplied from date of receipt. -80°C for 3 months after reconstitution. Recommend to aliquot the protein into smaller quantities for optimal storage. Please minimize freeze-thaw cycles.

 Tel: 1-631-559-9269 1-516-512-3133

 Email: info@creative-biomart.com  Fax: 1-631-938-8127

 45-1 Ramsey Road, Shirley, NY 11967, USA

Reconstitution Dissolve the lyophilized protein in distilled water.

GENE INFORMATION

Gene Name ACE2 angiotensin I converting enzyme (peptidyl-dipeptidase A) 2 [Homo sapiens]

Official Symbol ACE2

Synonyms ACE2; angiotensin I converting enzyme (peptidyl-dipeptidase A) 2; angiotensin-converting enzyme 2; metalloprotease MPROT15; ACE-related carboxypeptidase; angiotensin I converting enzyme 2; angiotensin-converting enzyme homolog; ACEH;

Gene ID 59272

mRNA Refseq NM_021804

Protein Refseq NP_068576

MIM 300335

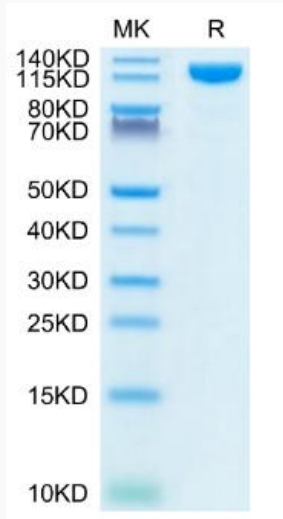
UniProt ID Q9BYF1

 Tel: 1-631-559-9269 1-516-512-3133

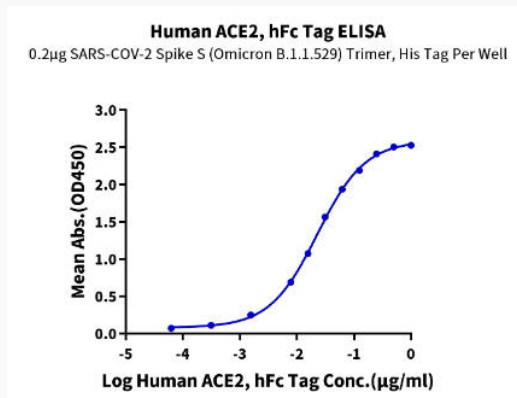
 Email: info@creative-biomart.com  Fax: 1-631-938-8127

 45-1 Ramsey Road, Shirley, NY 11967, USA

Bis-Tris PAGE



ELISA Data



 Tel: 1-631-559-9269 1-516-512-3133

 Email: info@creative-biomart.com  Fax: 1-631-938-8127

 45-1 Ramsey Road, Shirley, NY 11967, USA