

Recombinant Human ACE2 Protein, His-tagged

Cat. No. ACE2-735H Lot. No. (See product label)

SPECIFICATION

Product Overview	Recombinant protein of human angiotensin I converting enzyme (peptidyl-dipeptidase A) 2 (ACE2) with a C-His tag was expressed in HEK293T.
Species	Human
Source	HEK293
Description	The protein encoded by this gene belongs to the angiotensin-converting enzyme family of dipeptidyl carboxydipeptidases and has considerable homology to human angiotensin 1 converting enzyme. This secreted protein catalyzes the cleavage of angiotensin I into angiotensin 1-9, and angiotensin II into the vasodilator angiotensin 1-7. The organ- and cell-specific expression of this gene suggests that it may play a role in the regulation of cardiovascular and renal function, as well as fertility. In addition, the encoded protein is a functional receptor for the spike glycoprotein of the human coronaviruses SARS and HCoV-NL63.
Molecular Mass	84.6 kDa
Endotoxin	< 0.1 EU per g protein as determined by LAL test.
Purity	>95% as determined by SDS-PAGE and Coomassie blue staining.
Concentration	>50 µg/mL as determined by microplate BCA method
Storage Buffer	20mM Tris-HCl, 150mM NaCl, 0.1mM ZnCl ₂ , 10% Glycerol, pH 7.5.

 Tel: 1-631-559-9269 1-516-512-3133

 Email: info@creative-biomart.com  Fax: 1-631-938-8127

 45-1 Ramsey Road, Shirley, NY 11967, USA

GENE INFORMATION

Gene Name ACE2 angiotensin I converting enzyme 2 [Homo sapiens (human)]

Official Symbol ACE2

Synonyms ACE2; angiotensin I converting enzyme 2; ACEH; angiotensin-converting enzyme 2; ACE-related carboxypeptidase; angiotensin I converting enzyme (peptidyl-dipeptidase A) 2; angiotensin-converting enzyme homolog; metalloprotease MPROT15; peptidyl-dipeptidase A; EC 3.4.17.23

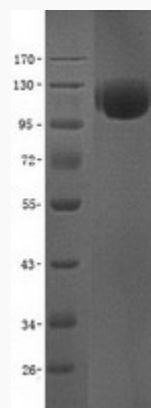
Gene ID 59272

mRNA Refseq NM_021804

Protein Refseq NP_068576

MIM 300335

UniProt ID Q9BYF1



 Tel: 1-631-559-9269 1-516-512-3133

 Email: info@creative-biomart.com  Fax: 1-631-938-8127

 45-1 Ramsey Road, Shirley, NY 11967, USA