

## Recombinant Human ACE2 protein, His-tagged

**Cat. No.** ACE2-736H    **Lot. No.** (See product label)

### SPECIFICATION

<b>Product Overview</b>	Recombinant Human ACE2 protein(Q9BYF1-1)(Gln18-Ser740), fused with C-terminal His tag, was expressed in HEK293.
<b>Species</b>	Human
<b>Source</b>	HEK293
<b>ProteinLength</b>	Gln18-Ser740
<b>Tag</b>	C-His
<b>Form</b>	Lyophilized from 0.22µm filtered solution in PBS (pH 7.4). Normally 8% trehalose is added as protectant before lyophilization.
<b>Bio-activity</b>	Immobilized Human ACE2, His Tag at 5µg/ml (100µl/Well) on the plate. Dose response curve for Biotinylated SARS-COV-2 Spike RBD, hFc Tag with the EC50 of 46.2ng/ml determined by ELISA.
<b>Molecular Mass</b>	The protein has a predicted MW of 84.7 kDa. Due to glycosylation, the protein migrates to 85-110 kDa based on Tris-Bis PAGE result.
<b>Endotoxin</b>	Less than 1EU per µg by the LAL method.
<b>Purity</b>	> 95% as determined by Tris-Bis PAGE; > 95% as determined by HPLC

 Tel: 1-631-559-9269    1-516-512-3133

 Email: [info@creative-biomart.com](mailto:info@creative-biomart.com)     Fax: 1-631-938-8127

 45-1 Ramsey Road, Shirley, NY 11967, USA

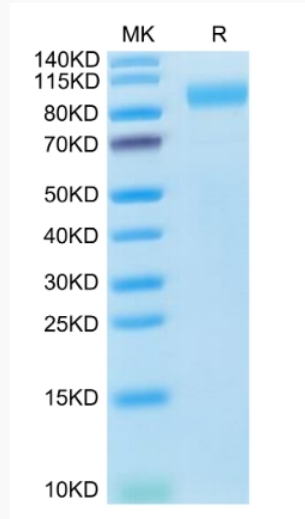
<b>Storage</b>	Reconstituted protein stable at -80°C for 12 months, 4°C for 1 week. Use a manual defrost freezer and avoid repeated freeze-thaw cycles.
<b>Reconstitution</b>	Centrifuge tubes before opening. Reconstituting to a concentration more than 100 µg/ml is recommended. Dissolve the lyophilized protein in distilled water.
<b>GENE INFORMATION</b>	
<b>Gene Name</b>	ACE2 angiotensin I converting enzyme (peptidyl-dipeptidase A) 2 [ Homo sapiens ]
<b>Official Symbol</b>	ACE2
<b>Synonyms</b>	ACE2; angiotensin I converting enzyme (peptidyl-dipeptidase A) 2; angiotensin-converting enzyme 2; metalloprotease MPROT15; ACE-related carboxypeptidase; angiotensin I converting enzyme 2; angiotensin-converting enzyme homolog; ACEH;
<b>Gene ID</b>	59272
<b>mRNA Refseq</b>	NM_021804
<b>Protein Refseq</b>	NP_068576
<b>MIM</b>	300335
<b>UniProt ID</b>	Q9BYF1

 Tel: 1-631-559-9269 1-516-512-3133

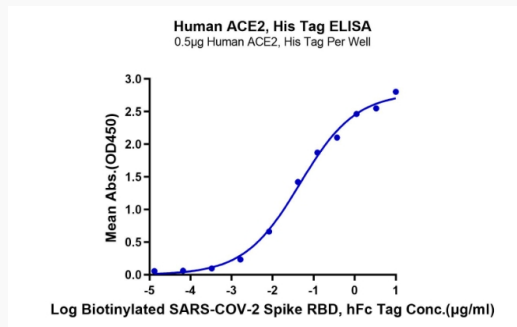
 Email: [info@creative-biomart.com](mailto:info@creative-biomart.com)  Fax: 1-631-938-8127

 45-1 Ramsey Road, Shirley, NY 11967, USA

**Tris-Bis PAGE**



**ELISA Data**



 Tel: 1-631-559-9269 1-516-512-3133

 Email: [info@creative-biomart.com](mailto:info@creative-biomart.com)  Fax: 1-631-938-8127

 45-1 Ramsey Road, Shirley, NY 11967, USA