

Recombinant Human ACHE protein, GST-tagged

Cat. No. ACHE-3644H Lot. No. (See product label)

SPECIFICATION

Product Overview	Recombinant Human ACHE protein(1-346 aa), fused with N-terminal GST tag, was expressed in E. coli.
Species	Human
Source	E.coli
ProteinLength	1-346 aa
Tag	N-GST
Form	The purified protein was Lyophilized from sterile PBS (58mM Na ₂ HPO ₄ ,17mM NaH ₂ PO ₄ , 68mM NaCl, pH7.4). 5 % trehalose and 5 % mannitol are added as protectant before lyophilization.
Purity	90%, by SDS-PAGE with Coomassie Brilliant Blue staining.
Storage	Short-term storage: Store at 2-8°C for (1-2 weeks). Long-term storage: Aliquot and store at -20°C to -80°C for up to 3 months, reconstitution with sterile water and addition of an equal volume of glycerol. Avoid repeat freeze-thaw cycles.
Reconstitution	Reconstitute at 0.25 µg/µl in 200 µl sterile water for short-term storage. After reconstitution with sterile water, if glycerol has no effect on subsequent experiments, it is recommended to add an equal volume of glycerol for long-term storage.

 Tel: 1-631-559-9269 1-516-512-3133

 Email: info@creative-biomart.com  Fax: 1-631-938-8127

 45-1 Ramsey Road, Shirley, NY 11967, USA

AA Sequence

ACHAAMRPPQCLLHTPSLASPLLLLLLVLLGGGVGAEGREDAELLVTVRGGRLRGI
 RLKTPGGPVSAFLGIPFAEPPMGPRRFLPPEPKQPWSGVVDATTFQSVCYQYVDTL
 YPGFEGTEMWNPNRELSDECLYLNWVTPYPRPTSPTPVIVWIYGGGFYSGASSLDV
 YDGRFLVQAERTVLVSMNYRVGAFGLALPGSREAPGNVGLLDQRLALQWVQENV
 AAFGGDPTSVTLFGESAGAASVGMHLLSPPSRGLFHRAVLQSGAPNGPWATVGMG
 EARRRATQLAHLVGCPPGGTGGNDTELVACLRTRPAQVLVNHEWHVLPQESVFRF
 SFVPVVDGDFLSD

GENE INFORMATION

Gene Name [ACHE acetylcholinesterase \[Homo sapiens \]](#)

Official Symbol [ACHE](#)

Synonyms ACHE; acetylcholinesterase; acetylcholinesterase (YT blood group) , acetylcholinesterase (Yt blood group) , YT; Yt blood group; apoptosis-related acetylcholinesterase; YT; ACEE; ARACHE; N-ACHE;

Gene ID [43](#)

mRNA Refseq [NM_000665](#)

Protein Refseq [NP_000656](#)

MIM [100740](#)

UniProt ID [P22303](#)

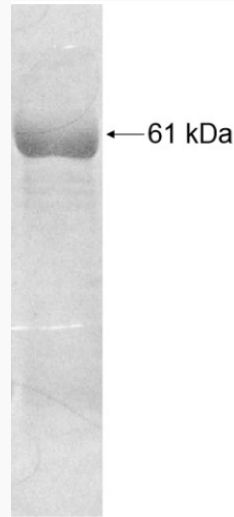
 Tel: 1-631-559-9269 1-516-512-3133

 Email: info@creative-biomart.com  Fax: 1-631-938-8127

 45-1 Ramsey Road, Shirley, NY 11967, USA



SDS-PAGE



☎ Tel: 1-631-559-9269 1-516-512-3133

☎ Email: info@creative-biomart.com ☎ Fax: 1-631-938-8127

☎ 45-1 Ramsey Road, Shirley, NY 11967, USA