

Recombinant Human ACHE protein, His-tagged

Cat. No. ACHE-4579H Lot. No. (See product label)

SPECIFICATION

Product Overview	Recombinant Human ACHE protein(P22303)(32-614 aa), fused with C-terminal His tag, was expressed in E.coli.
Species	Human
Source	E.coli
ProteinLength	32-614 aa
Form	For liquid formulations, the standard storage buffer consists of a Tris or PBS based solution supplemented with 5-50% glycerol. When provided as lyophilized powder, the product undergoes freeze-drying from a Tris- or PBS-based formulation containing 6% trehalose, adjusted to pH 8.0 prior to the lyophilization process.
Molecular Mass	71.5 kDa
AASequence	<p>EGREDAELLVTVRGGRLRGIRLKTGGPVSAFLGIPFAEPPMGPRRFLPPEPKQPW SGVVDATTFQSVCYQYVDTLYPGFEGTEMWNPNRELSDCLYLNVWTPYPRPTSP TPVLVWIYGGGFYSGASSLDVYDGRFLVQAERTVLVSMNYRVGAFGFLALPGSREA PGNVGLLDQRLALQWVQENVAAFGGDPTSVTLFGESAGAASVGMHLLSPPSRGLF HRAVLQSGAPNGPWATVGMGEARRRATQLAHLVGCPPGGTGGNDTELVACLRTR PAQVLNHEWHVLPQESVFRFSFVPVVDGDFLSDTPEALINAGDFHGLQVLVGVVK DEGSYFLVYGAPGFSKDNESLISRAEFLAGVRVGVQVSDLAEEAVVLHYTDWLHP EDPARLREALSDVVGDHNVCPVAQLAGRLAAQGARVYAYVFEHRASTLSWPLWM GVPHGYEIEFIFGIPLDPSRNYTAEKIFAQRLMRYWANFARTGDPNEPRDPKAPQW</p>

 Tel: 1-631-559-9269 1-516-512-3133

 Email: info@creative-biomart.com  Fax: 1-631-938-8127

 45-1 Ramsey Road, Shirley, NY 11967, USA

PPYTAGAQQYVSLDLRPLEVRRGLRAQACAFWNRFLPKLLSATDTLDEAERQWKAE
FHRWSSYMVHWKNQFDHYSKQDRCSL

Purity Greater than 90% as determined by SDS-PAGE.

Storage Store at -20°C/-80°C upon receipt, aliquoting is necessary for mutiple use. Avoid repeated freeze-thaw cycles.

Reconstitution Please reconstitute protein indeionized sterile water to a concentration of 0.1-1.0 mg/mL. Aliquot for long-term storage at -80°C.

GENE INFORMATION

Gene Name [ACHE](#) acetylcholinesterase [[Homo sapiens](#)]

Official Symbol [ACHE](#)

Synonyms ACHE; acetylcholinesterase; acetylcholinesterase (YT blood group) , acetylcholinesterase (Yt blood group) , YT; Yt blood group; apoptosis-related acetylcholinesterase; YT; ACEE; ARACHE; N-ACHE;

Gene ID [43](#)

mRNA Refseq [NM_000665](#)

Protein Refseq [NP_000656](#)

MIM [100740](#)

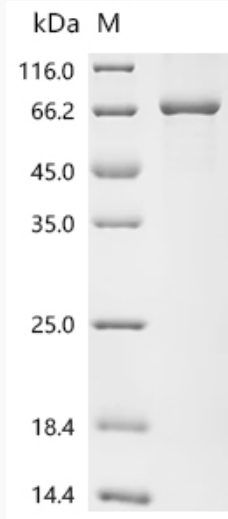
UniProt ID [P22303](#)

 Tel: 1-631-559-9269 1-516-512-3133

 Email: info@creative-biomart.com  Fax: 1-631-938-8127

 45-1 Ramsey Road, Shirley, NY 11967, USA

SDS-PAGE



 Tel: 1-631-559-9269 1-516-512-3133

 Email: info@creative-biomart.com  Fax: 1-631-938-8127

 45-1 Ramsey Road, Shirley, NY 11967, USA