

Active Recombinant Human ACKR1 Full Length Transmembrane protein, His-tagged

Cat. No. ACKR1-01H Lot. No. (See product label)

SPECIFICATION

Product Overview	Active Recombinant Human Atypical chemokine receptor 1(1-336aa) with a N-terminal 10xHis-tag was expressed in vitro E.coli expression system.
Species	Human
Source	E.coli
ProteinLength	1-336aa
Form	Tris-based buffer50% glycerol
Bio-activity	Measured by its binding ability in a functional ELISA. Immobilized ACKR1 at 1 µg/ml can bind human CCL2, the EC50 of human CCL2 protein is 48.64-60.24 µg/ml.
Molecular Mass	41.1 kDa
AA Sequence	MGNCLHRAELSPSTENSSQLDFEDVWNSSYGVNDSFPDGDYGANLEAAAPCHSCN LLDSDALPFFILTSVLGILASSTVLFMLFRPLFRWQLCPGWVLAQLAVGSAFVSIVVP VLAPGLGSTRSSALCSLGYCVWYGSFAFAQALLGCHASLGHRLGAGQVPGLTLGLT VGIWGVAAALLTLPVTLASGASGGLCTLIYSTEKALQATHTVACLAIFVLLPLGLFGAK GLKKALGMGPGPWMNILWAWFIFWWPHGVVGLDFLVRSKLLLLSTCLAQQALDLL LNLAEALAILHCVATPLLLALFCHQATRLLPSLPLPEGWSSHLDLTLGSKS
Purity	Greater than 85% as determined by SDS-PAGE.

 Tel: 1-631-559-9269 1-516-512-3133

 Email: info@creative-biomart.com  Fax: 1-631-938-8127

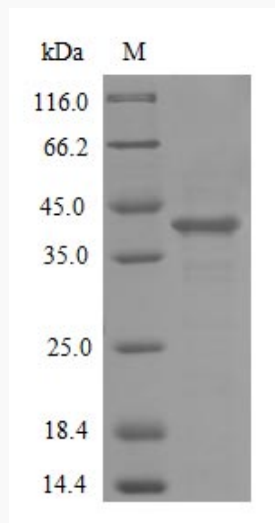
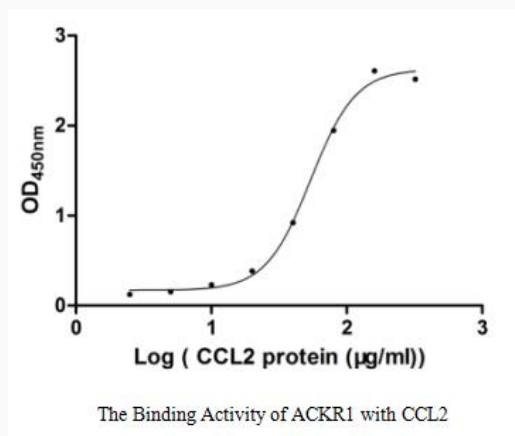
 45-1 Ramsey Road, Shirley, NY 11967, USA

Storage

Store at -20°C/-80°C upon receipt, aliquoting is necessary for multiple use. Avoid repeated freeze-thaw cycles.

Reconstitution

Please reconstitute protein in deionized sterile water to a concentration of 0.1-1.0 mg/mL. We recommend to add 5-50% of glycerol (final concentration) and aliquot for long-term storage at -20°C/-80°C. Our default final concentration of glycerol is 50%.

SDS-PAGE**Activity**

Tel: 1-631-559-9269 1-516-512-3133

Email: info@creative-biomart.com Fax: 1-631-938-8127

45-1 Ramsey Road, Shirley, NY 11967, USA