

Recombinant Human ACLY Protein, Myc/DDK-tagged, C13 and N15-labeled

Cat. No. ACLY-1295H **Lot. No.** (See product label)

SPECIFICATION

Product Overview	ACLY MS Standard C13 and N15-labeled recombinant protein (NP_001087) with a C-terminal MYC/DDK tag, was expressed in HEK293 cells.
Species	Human
Source	HEK293
Description	ATP citrate lyase is the primary enzyme responsible for the synthesis of cytosolic acetyl-CoA in many tissues. The enzyme is a tetramer (relative molecular weight approximately 440,000) of apparently identical subunits. It catalyzes the formation of acetyl-CoA and oxaloacetate from citrate and CoA with a concomitant hydrolysis of ATP to ADP and phosphate. The product, acetyl-CoA, serves several important biosynthetic pathways, including lipogenesis and cholesterologenesis. In nervous tissue, ATP citrate-lyase may be involved in the biosynthesis of acetylcholine. Multiple transcript variants encoding distinct isoforms have been identified for this gene.
Molecular Mass	120.8 kDa
AA Sequence	MSAKAISEQTGKELLYKFICTTSAIQNRFKYARVTPD TDWARLLQDHPWLLSQNLVV KPDQLIKRRGKLGVLGVNLTLDGVKSWLKPRLGQEATVGKATGFLKNFLIEPFVPHS QAEEFYVCIYATREGDYVLFHHEGGVDVGDVDAKAQKLLVGVDEKLN PEDIKKHLV HAPEDKKEILASFISGLFNFYEDLYFTYLEINPLVVTKDG VYVLDLAAKVDATADYICK VKWGDIEFPPPPFGREAYPEEAYIADLDAKSGASLKL TLLNPKGRIWTMVAGGGASVV

 Tel: 1-631-559-9269 1-516-512-3133

 Email: info@creative-biomart.com  Fax: 1-631-938-8127

 45-1 Ramsey Road, Shirley, NY 11967, USA

YSDTICDLGGVNELANYGEYSGAPSEQQTYDYAKTILSLMTREKHPDGKILIIGGSIAN
 FTNVAATFKGIVRAIRDYQGPLKEHEVTIFVRRGGPNYQEGLRVMGEVGGKTTGIPIHV
 FGTETHMTAIVGMALGHRPIPQPPTAAHTANFLLNASGSTSTPAPSRTASFSESRA
 DEVAPAKKAKPAMPQDSVSPRSLQGKSTTLFSRHTKAIWGMQTRAVQGMDFD
 YVCSRDEPSVAAMVYPFTGDHKQKFYWGHEILIPVFKNMADAMRKHPEVDVLIN
 ASLSAYDSTMETMNYAQIRTAIIAEGIPEALTRKLIKADQKGVTIIGPATVGGIKPG
 CFKIGNTGGMLDNILASKLYRPGSVAYVSRSGGMSNELNIIISRTTDGVYEGVAIGG
 DRYPGSTFMDHVLRYQDTPGVKMIVVLGEIGGTEEYKICRGIKEGRLTKPIVCWCIGT
 CATMFSSEVQFGHAGACANQASETAVAKNQALKEAGVFVPRSFDELGEIISVYED
 LVANGVIVPAQEVPPPTVPMDYWARELGLIRKPASFMTSICDERGQELIYAGMPITE
 VFKEEMGIGGVLGLLWFQKRLPKYSCQFIEMCLMVTADHGPAVSGAHNTIICARAGK
 DLVSSLTSGLLTIGDRFGGALDAAAKMFSKAFDSGIIPEFVNKMKKEGKLIMGIGHR
 VKSINNPDMRVQILKDYVRQHFPATPLLDYALEVEKITTSKKPNLILNVDGLIGVAFVD
 MLRNCGSFTREEADEYIDIGALNGIFVLGRSMGFIGHYLDQRLKQGLYRHPWDDIS
 YVLPEHMSMTRTRPLEQKLISEEDLAANDILDYKDDDDKV

Purity > 80% as determined by SDS-PAGE and Coomassie blue staining

Stability Stable for 3 months from receipt of products under proper storage and handling conditions.

Storage Store at -80 centigrade. Avoid repeated freeze-thaw cycles.

Concentration 50 µg/mL as determined by BCA

Storage Buffer 100 mM glycine, 25 mM Tris-HCl, pH 7.3.

GENE INFORMATION

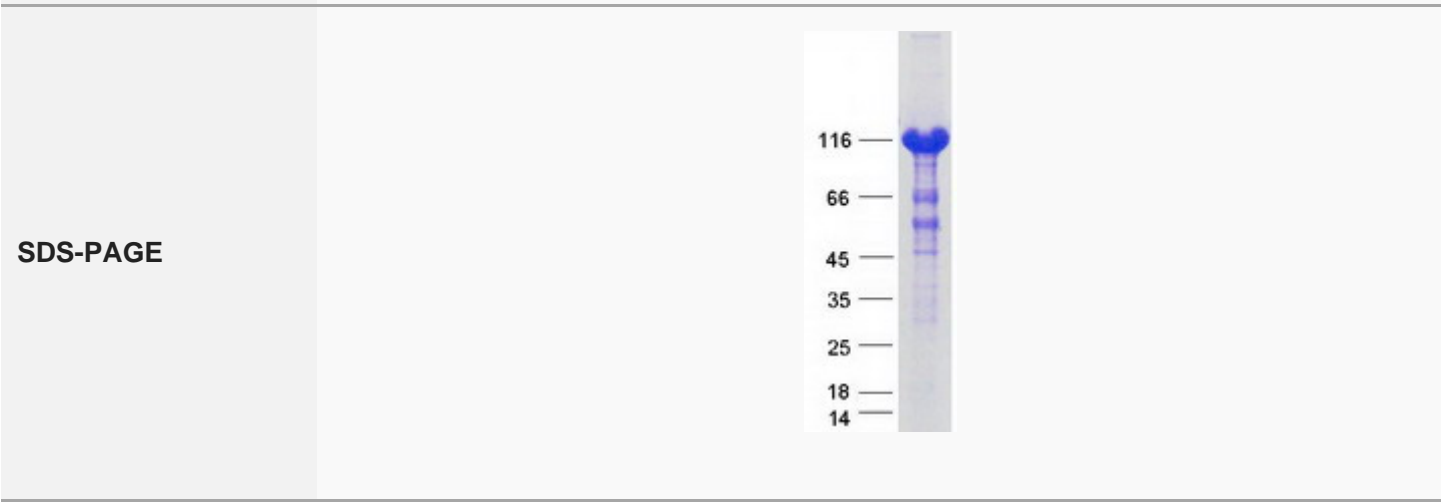
Gene Name [ACLY ATP citrate lyase \[Homo sapiens \(human\) \]](#)

 Tel: 1-631-559-9269 1-516-512-3133

 Email: info@creative-biomart.com  Fax: 1-631-938-8127

 45-1 Ramsey Road, Shirley, NY 11967, USA

Official Symbol	ACLY
Synonyms	ACLY; ATP citrate lyase; ATP-citrate synthase; ACL; ATP citrate synthase; ATPCL; CLATP; citrate cleavage enzyme; ATP-citrate (pro-S-)-lyase;
Gene ID	47
mRNA Refseq	NM_001096
Protein Refseq	NP_001087
MIM	108728
UniProt ID	P53396



Tel: 1-631-559-9269 1-516-512-3133

Email: info@creative-biomart.com Fax: 1-631-938-8127

45-1 Ramsey Road, Shirley, NY 11967, USA