

# Recombinant Human ACLY Protein (4-265 aa), His-SUMO-tagged

**Cat. No.** ACLY-1907H    **Lot. No.** (See product label)

## SPECIFICATION

|                         |  |
|-------------------------|--|
| <b>Product Overview</b> | Recombinant Human ACLY Protein (4-265 aa) is produced by E. coli expression system. This protein is fused with a 6xHis-SUMO tag at the N-terminal. Research Area: Metabolism. Protein Description: Partial.  |
| <b>Species</b>          | Human  |
| <b>Source</b>           | E.coli   |
| <b>ProteinLength</b>    | 4-265 aa   |
| <b>Description</b>      | ATP citrate-lyase is the primary enzyme responsible for the synthesis of cytosolic acetyl-CoA in many tissues. Has a central role in de novo lipid synthesis. In nervous tissue it may be involved in the biosynthesis of acetylcholine.   |
| <b>Form</b>             | Tris-based buffer,50% glycerol   |
| <b>Molecular Mass</b>   | 45.5 kDa   |
| <b>AA Sequence</b>      | KAISEQTGKELLYKFICTTSAIQNRFKYARVTPD TDWARLLQDHPWLLSQNLVVKPD<br>QLIKRRGKLGVLGVNLTLDGVKSWLKPRLGQEATVGKATGFLKNFLIEPFVPHSQAE<br>EFYVCIYATREGDYVLFHHEGGVDVGDVDAKAQKLLVGVDEKLNPEDIKKHLLVHAP<br>EDKKEILASFISGLFNFYEDLYFTYLEINPLVVTKDG VYVLDLAAKVDATADYICKVKW<br>GDIEFPPPFGREAYPEEAYIADLDAKSGASLK |

 Tel: 1-631-559-9269    1-516-512-3133

 Email: [info@creative-biomart.com](mailto:info@creative-biomart.com)     Fax: 1-631-938-8127

 45-1 Ramsey Road, Shirley, NY 11967, USA

|                      |   |
|----------------------|---|
| <b>Purity</b>        | > 90% as determined by SDS-PAGE.  |
| <b>Notes</b>         | Repeated freezing and thawing is not recommended. Store working aliquots at 4 centigrade for up to one week.  |
| <b>Storage</b>       | The shelf life is related to many factors, storage state, buffer ingredients, storage temperature and the stability of the protein itself. Generally, the shelf life of liquid form is 6 months at -20 centigrade/-80 centigrade. The shelf life of lyophilized form is 12 months at -20 centigrade/-80 centigrade. |
| <b>Concentration</b> | A hardcopy of COA with reconstitution instruction is sent along with the products.  |

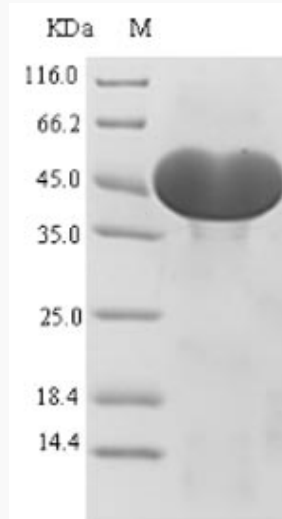
## GENE INFORMATION

|                        |   |
|------------------------|---|
| <b>Gene Name</b>       | ACLY ATP citrate lyase [ Homo sapiens ]                           |
| <b>Official Symbol</b> | ACLY  |
| <b>Synonyms</b>        | ACLY; ATP citrate lyase; ATP-citrate synthase; ACL; ATPCL; CLATP; |
| <b>Gene ID</b>         | 47  |
| <b>mRNA Refseq</b>     | NM_001096   |
| <b>Protein Refseq</b>  | NP_001087   |
| <b>MIM</b>             | 108728  |
| <b>UniProt ID</b>      | P53396  |

 Tel: 1-631-559-9269 1-516-512-3133

 Email: [info@creative-biomart.com](mailto:info@creative-biomart.com)  Fax: 1-631-938-8127

 45-1 Ramsey Road, Shirley, NY 11967, USA



(Tris-Glycine gel) Discontinuous SDS-PAGE (reduced) with 5% enrichment gel and 15% separation gel.

 Tel: 1-631-559-9269 1-516-512-3133

 Email: [info@creative-biomart.com](mailto:info@creative-biomart.com)  Fax: 1-631-938-8127

 45-1 Ramsey Road, Shirley, NY 11967, USA