

Recombinant Human ACO2 Protein, His-tagged

Cat. No. ACO2-095H **Lot. No.** (See product label)

SPECIFICATION

Product Overview	Recombinant Human ACO2 Protein(NP_001089)(1-300 aa), fused to His tag, was expressed in E. coli.
Species	Human
Source	E.coli
ProteinLength	1-300 aa
Form	The purified protein was Lyophilized from sterile PBS (58mM Na ₂ HPO ₄ , 17mM NaH ₂ PO ₄ , 68mM NaCl, pH7.). 5 % trehalose and 5 % mannitol are added as protectants before lyophilization.
AA Sequence	MAPYSLLVTRLQKALGVRQYHVASVLCQRAKVAMSHFEPNEYIHYDLLEKNINIVRK RLNRPLTLSEKIVYGHLLDDPASQEIERGKSYLRLRPDRVAMQDATAQMAMLQFISSG LSKVAVPSTIHCDHLIEAQVGGKDLRRAKDINQEVYNFLATAGAKYGVGFWKPGSG IIHQIILENYAYPGVLLIGTDSHTPNGGGLGGICIGVGGADAVDVMAGIPWELKCPKVI GVKLTGSLSGWSSPKDVILKVAGILTVKGGTGAIVEYHGPGVDSISCTGMATICNMG AEIGATTSVFPYN
Purity	90%, by SDS-PAGE with Coomassie Brilliant Blue staining.
Storage	Short-term storage: Store at 2-8°C for (1-2 weeks). Long-term storage: Aliquot and store at -20°C to -80°C for up to 3 months, buffer containing 50% glycerol is recommended for reconstitution. Avoid repeat freeze-thaw

 Tel: 1-631-559-9269 1-516-512-3133

 Email: info@creative-biomart.com  Fax: 1-631-938-8127

 45-1 Ramsey Road, Shirley, NY 11967, USA

cycles.

Reconstitution

Reconstitute at 0.25 g/μl in 200 μl sterile water for short-term storage.
 Reconstitution with 200 μl 50% glycerol solution is recommended for longer term storage (see Stability and Storage for more details).
 If a different concentration is needed for your purposes please adjust the reconstitution volume as required (please note: the ion concentration of the final solution will vary according to the volume used).
 Note: Centrifuge vial before opening. When reconstituting, gently pipet and wash down the sides of the vial to ensure full recovery of the protein into solution.

GENE INFORMATION

Gene Name [ACO2 aconitase 2, mitochondrial \[Homo sapiens \]](#)

Official Symbol [ACO2](#)

Synonyms [ACO2](#); aconitase 2, mitochondrial; aconitate hydratase, mitochondrial; ACONM; citrate hydro-lyase; ICRD; MGC20605; MGC33908;

Gene ID [50](#)

mRNA Refseq [NM_001098](#)

Protein Refseq [NP_001089](#)

MIM [100850](#)

UniProt ID [Q99798](#)

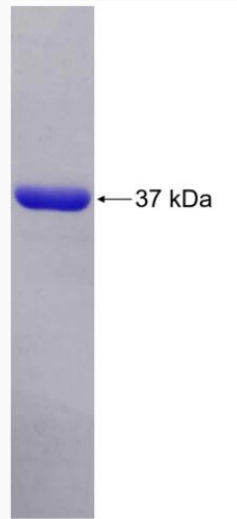
 Tel: 1-631-559-9269 1-516-512-3133

 Email: info@creative-biomart.com  Fax: 1-631-938-8127

 45-1 Ramsey Road, Shirley, NY 11967, USA



SDS-PAGE



Tel: 1-631-559-9269 1-516-512-3133

Email: info@creative-biomart.com Fax: 1-631-938-8127

45-1 Ramsey Road, Shirley, NY 11967, USA