

Recombinant Human ACOT13 Protein, Myc/DDK-tagged, C13 and N15-labeled

Cat. No. ACOT13-5615H **Lot. No.** (See product label)

SPECIFICATION

Product Overview	ACOT13 MS Standard C13 and N15-labeled recombinant protein (NP_060943) with a C-terminal MYC/DDK tag, was expressed in HEK293 cells.
Species	Human
Source	HEK293
Description	This gene encodes a member of the thioesterase superfamily. In humans, the protein co-localizes with microtubules and is essential for sustained cell proliferation. The orthologous mouse protein forms a homotetramer and is associated with mitochondria. The mouse protein functions as a medium- and long-chain acyl-CoA thioesterase. Multiple transcript variants encoding different isoforms have been found for this gene.
Molecular Mass	15 kDa
AA Sequence	MTSMTQSLREVIKAMTKARNFERVLGKITLVSAAPGKVICEMKVEEHTNAIGTLHG GLTATLVDNISTMALLCTERGA PGVSVDMNITYMSPAKLGEDIVITAHVLKQGKTLAF TSVDLTNKATGKLI AQGRHTKHLGNTRTRPLEQKLISEEDLAANDILDYKDDDDKV
Purity	> 80% as determined by SDS-PAGE and Coomassie blue staining
Stability	Stable for 3 months from receipt of products under proper storage and handling conditions.

 Tel: 1-631-559-9269 1-516-512-3133

 Email: info@creative-biomart.com  Fax: 1-631-938-8127

 45-1 Ramsey Road, Shirley, NY 11967, USA

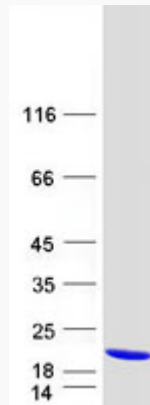
Storage	Store at -80 centigrade. Avoid repeated freeze-thaw cycles.
Concentration	50 µg/mL as determined by BCA
Storage Buffer	100 mM glycine, 25 mM Tris-HCl, pH 7.3.
GENE INFORMATION	
Gene Name	ACOT13 acyl-CoA thioesterase 13 [Homo sapiens (human)]
Official Symbol	ACOT13
Synonyms	ACOT13; acyl-CoA thioesterase 13; THEM2, thioesterase superfamily member 2; acyl-coenzyme A thioesterase 13; HT012; hypothalamus protein HT012; thioesterase superfamily member 2; THEM2; PNAS-27;
Gene ID	55856
mRNA Refseq	NM_018473
Protein Refseq	NP_060943
MIM	615652
UniProt ID	Q9NPJ3

 Tel: 1-631-559-9269 1-516-512-3133

 Email: info@creative-biomart.com  Fax: 1-631-938-8127

 45-1 Ramsey Road, Shirley, NY 11967, USA

SDS-PAGE



 Tel: 1-631-559-9269 1-516-512-3133

 Email: info@creative-biomart.com  Fax: 1-631-938-8127

 45-1 Ramsey Road, Shirley, NY 11967, USA