

# Recombinant Human ACOX1 Protein (Met1-Leu660 ), N-His-tagged

Cat. No. ACOX1-0388H Lot. No. (See product label)

## SPECIFICATION

<b>Product Overview</b>	Recombinant human ACOX1 (Met1-Leu660 ) was fused with the N-terminal His tag and was expressed in E. coli.
<b>Species</b>	Human
<b>Source</b>	E.coli
<b>ProteinLength</b>	Met1-Leu660
<b>Form</b>	Lyophilized powder/frozen liquid
<b>Molecular Mass</b>	72.6 kDa
<b>Purity</b>	>90% as determined by SDS-PAGE
<b>Notes</b>	For research use only.
<b>Storage</b>	Use a manual defrost freezer and avoid repeated freeze thaw cycles. Store at 2 to 8 centigrade for one week. Store at -20 to -80 centigrade for twelve months from the date of receipt.
<b>Storage Buffer</b>	Supplied as solution form in PBS or lyophilized from PBS.
<b>Reconstitution</b>	Reconstitute in sterile water for a stock solution.

 Tel: 1-631-559-9269 1-516-512-3133

 Email: [info@creative-biomart.com](mailto:info@creative-biomart.com)  Fax: 1-631-938-8127

 45-1 Ramsey Road, Shirley, NY 11967, USA

**Shipping** They are shipped out with dry ice/blue ice unless customers require otherwise.

## GENE INFORMATION

**Gene Name** [ACOX1 acyl-CoA oxidase 1, palmitoyl \[ Homo sapiens \(human\) \]](#)

**Official Symbol** [ACOX1](#)

**Synonyms** ACOX1; acyl-CoA oxidase 1, palmitoyl; acyl Coenzyme A oxidase 1, palmitoyl; peroxisomal acyl-coenzyme A oxidase 1; PALMCOX; AOX; palmitoyl-CoA oxidase; straight-chain acyl-CoA oxidase; acyl-CoA oxidase, straight-chain; peroxisomal fatty acyl-CoA oxidase; acyl-Coenzyme A oxidase 1, palmitoyl; ACOX; SCOX; MGC1198;

**Gene ID** [51](#)

**mRNA Refseq** [NM\\_001185039](#)

**Protein Refseq** [NP\\_001171968](#)

**MIM** [609751](#)

**UniProt ID** [Q15067](#)

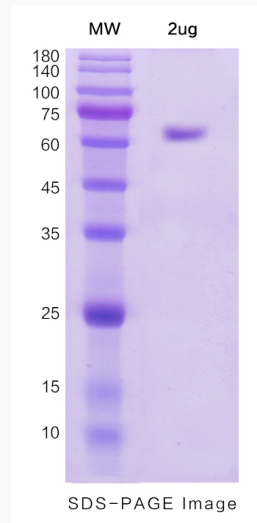
 Tel: 1-631-559-9269 1-516-512-3133

 Email: [info@creative-biomart.com](mailto:info@creative-biomart.com)  Fax: 1-631-938-8127

 45-1 Ramsey Road, Shirley, NY 11967, USA



**SDS-PAGE**



Tel: 1-631-559-9269 1-516-512-3133

Email: [info@creative-biomart.com](mailto:info@creative-biomart.com) Fax: 1-631-938-8127

45-1 Ramsey Road, Shirley, NY 11967, USA