

Active Recombinant Human ACP1 Protein, His tagged

Cat. No. ACP1-1068H **Lot. No.** (See product label)

SPECIFICATION

Product Overview	Recombinant ACP1 (1-158 aa), fused to His-tag at N-terminus, was expressed in E. coli and purified by conventional chromatography techniques.
Species	Human
Source	E.coli
ProteinLength	1-158 aa
Description	The product of this gene belongs to the phosphotyrosine protein phosphatase family of proteins. It functions as an acid phosphatase and a protein tyrosine phosphatase by hydrolyzing protein tyrosine phosphate to protein tyrosine and orthophosphate. This enzyme also hydrolyzes orthophosphoric monoesters to alcohol and orthophosphate. This gene is genetically polymorphic, and three common alleles segregating at the corresponding locus give rise to six phenotypes. Each allele appears to encode at least two electrophoretically different isozymes, Bf and Bs, which are produced in allele-specific ratios. Multiple alternatively spliced transcript variants encoding distinct isoforms have been identified for this gene.
Form	Liquid
AASequence	MAEQATKSVLFFVCLGNICRSPIAEAVFRKLVTDQNISENWVIDSGAVSDWNVGRSPD PRAVSLRNHGIHTAHKARQITKEDFATFDYILCMDENLRLNLRKSNQVKTCKAKIE LLGSYDPQKQLIIEDPYYGNDSDFETVYQQCVRCCRAFLEKAH

 Tel: 1-631-559-9269 1-516-512-3133

 Email: info@creative-biomart.com  Fax: 1-631-938-8127

 45-1 Ramsey Road, Shirley, NY 11967, USA

Molecular Mass	20.1 kDa (178aa) confirmed by MALDI-TOF
Bio-activity	Specific activity is > 15,000 unit/mg, and is defined as the amount of enzyme that hydrolyze 1.0 nmole of p-nitrophenyl phosphate (pNPP) per minute at pH 7.5 at 37 centigrade.
Endotoxin	< 1 EU/μg of protein (determined by LAL method)
Purity	> 95% as determined by SDS-PAGE
Application	SDS-PAGE, Enzyme Activity
Note	For research use only. This product is not intended or approved for human, diagnostics or veterinary use.
Storage	Can be stored at +2 to +8 centigrade for 1 week. For long term storage, aliquot and store at -20 to -80 centigrade. Avoid repeated freezing and thawing cycles.
Storage Buffer	20mM MES buffer (pH 6.0) containing 0.1mM PMSF, 2mM EDTA, 10% glycerol
Concentration	1 mg/mL (determined by Bradford assay)

GENE INFORMATION

Gene Name	ACP1 acid phosphatase 1, soluble [Homo sapiens (human)]
Official Symbol	ACP1
Synonyms	ACP1; acid phosphatase 1, soluble; low molecular weight phosphotyrosine protein phosphatase; LMW-PTP; LMW-PTPase; adipocyte acid phosphatase; red cell acid phosphatase 1; protein tyrosine phosphatase; acid phosphatase of erythrocyte;

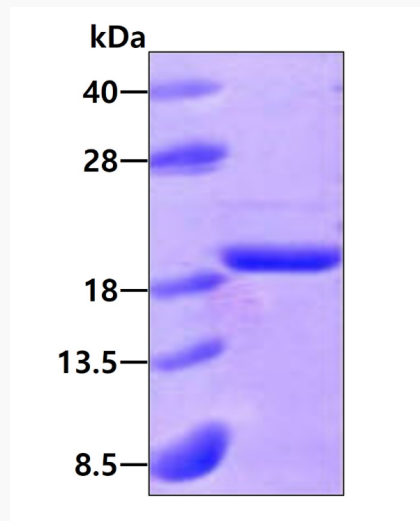
 Tel: 1-631-559-9269 1-516-512-3133

 Email: info@creative-biomart.com  Fax: 1-631-938-8127

 45-1 Ramsey Road, Shirley, NY 11967, USA

cytoplasmic phosphotyrosyl protein phosphatase; low molecular weight cytosolic acid phosphatase; HAAP; MGC3499; MGC111030;

Gene ID	52
mRNA Refseq	NM_007099
Protein Refseq	NP_009030
MIM	171500
UniProt ID	P24666

SDS-PAGE

3 µg by SDS-PAGE under reducing condition and visualized by coomassie blue stain.

 Tel: 1-631-559-9269 1-516-512-3133

 Email: info@creative-biomart.com  Fax: 1-631-938-8127

 45-1 Ramsey Road, Shirley, NY 11967, USA