

Active Recombinant Human ACP1 Protein, his-Tagged

Cat. No. ACP1-177H **Lot. No.** (See product label)

SPECIFICATION

Product Overview	Human ACP1 (NP_009030, 1 a.a. - 158 a.a.) full-length recombinant protein with His tag expressed in Escherichia coli.
Species	Human
Source	E.coli
Description	<p>The product of this gene belongs to the phosphotyrosine protein phosphatase family of proteins. It functions as an acid phosphatase and a protein tyrosine phosphatase by hydrolyzing protein tyrosine phosphate to protein tyrosine and orthophosphate. This enzyme also hydrolyzes orthophosphoric monoesters to alcohol and orthophosphate. This gene is genetically polymorphic, and three common alleles segregating at the corresponding locus give rise to six phenotypes. Each allele appears to encode at least two electrophoretically different isozymes, Bf and Bs, which are produced in allele-specific ratios. Multiple alternatively spliced transcript variants encoding distinct isoforms have been identified for this gene. [provided by RefSeq, Aug 2008]</p>
Form	Liquid
Bio-activity	Activity tested: > 60,000 unit/mg of protein
Molecular Mass	20.1 kDa
AA Sequence	MGSSHHHHHSSGLVPRGSHMAEQATKSVLFVCLGNICRSPIAEAVFRKLVTDQNIS

 Tel: 1-631-559-9269 1-516-512-3133

 Email: info@creative-biomart.com  Fax: 1-631-938-8127

 45-1 Ramsey Road, Shirley, NY 11967, USA

ENWVIDSGAVSDWNVGRSPDPRAVSCLRNHGIHTAHKARQITKEDFATFDYILCMD
 ESNLRLDLNRKSNQVKTCKAKIELLGSYDPQQLIIEDPYYGNDSDFETVYQQCVRCC
 RAFLEKAH

Endotoxin < 1.0 EU per 1 microgram of protein (determined by LAL method)

Purity > 95% by SDS-PAGE

Applications Functional Study SDS-PAGE

Storage Store at 4 centigrade for 1-2 weeks. For long term storage store at -20 or -80 centigrade. Aliquot to avoid repeated freezing and thawing.

Concentration 1 mg/mL

Storage Buffer In 20 mM MES 6.0, 0.1 mM PMSF, 2 mM EDTA (10% glycerol)

GENE INFORMATION

Gene Name [ACP1 acid phosphatase 1, soluble \[Homo sapiens \]](#)

Official Symbol [ACP1](#)

Synonyms ACP1; acid phosphatase 1, soluble; low molecular weight phosphotyrosine protein phosphatase; LMW-PTP; LMW-PTPase; adipocyte acid phosphatase; red cell acid phosphatase 1; protein tyrosine phosphatase; acid phosphatase of erythrocyte; cytoplasmic phosphotyrosyl protein phosphatase; low molecular weight cytosolic acid phosphatase; HAAP; MGC3499; MGC111030;

Gene ID [52](#)

 Tel: 1-631-559-9269 1-516-512-3133

 Email: info@creative-biomart.com  Fax: 1-631-938-8127

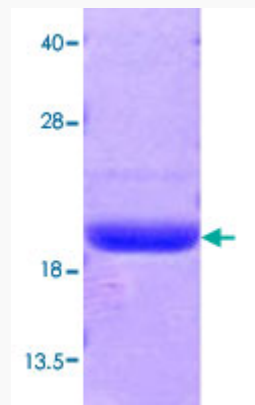
 45-1 Ramsey Road, Shirley, NY 11967, USA

mRNA Refseq [NM_001040649](#)

Protein Refseq [NP_001035739](#)

MIM [171500](#)

UniProt ID [P24666](#)



Loading 3 ug protein in 15% SDS-PAGE

 Tel: 1-631-559-9269 1-516-512-3133

 Email: info@creative-biomart.com  Fax: 1-631-938-8127

 45-1 Ramsey Road, Shirley, NY 11967, USA