

## Recombinant Human ACP1 Protein, GST-Tagged

**Cat. No.** ACP1-178H    **Lot. No.** (See product label)

### SPECIFICATION

<b>Product Overview</b>	Human ACP1 full-length ORF ( AAH07422, 1 a.a. - 158 a.a.) recombinant protein with GST-tag at N-terminal.
<b>Species</b>	Human
<b>Source</b>	Wheat Germ
<b>ProteinLength</b>	1-158 aa
<b>Description</b>	<p>The product of this gene belongs to the phosphotyrosine protein phosphatase family of proteins. It functions as an acid phosphatase and a protein tyrosine phosphatase by hydrolyzing protein tyrosine phosphate to protein tyrosine and orthophosphate. This enzyme also hydrolyzes orthophosphoric monoesters to alcohol and orthophosphate. This gene is genetically polymorphic, and three common alleles segregating at the corresponding locus give rise to six phenotypes. Each allele appears to encode at least two electrophoretically different isozymes, Bf and Bs, which are produced in allele-specific ratios. Multiple alternatively spliced transcript variants encoding distinct isoforms have been identified for this gene. [provided by RefSeq, Aug 2008]</p>
<b>Molecular Mass</b>	43.12 kDa
<b>AA Sequence</b>	MAEQATKSVLFLVCLGNICRSPIAEAVFRKLVTDQNISENWVIDSGAVSDWNVGRSPD PRAVSLRNHGIHTAHKARQITKEDFATFDYILCMDESNLRDLNRKSNQVKTCKAKIE LLGSYDPQKQLIIEDPYYGNDSDFFETVYQQCVRCCRAFLEKAH

 Tel: 1-631-559-9269    1-516-512-3133

 Email: [info@creative-biomart.com](mailto:info@creative-biomart.com)     Fax: 1-631-938-8127

 45-1 Ramsey Road, Shirley, NY 11967, USA

<b>Applications</b>	Phosphatase Assay (Cdc25) Phosphatase Assay (PTP) Enzyme-linked Immunoabsorbent Assay Western Blot (Recombinant protein) Antibody Production Protein Array
<b>Notes</b>	Best use within three months from the date of receipt of this protein.
<b>Storage</b>	Store at -80 centigrade. Aliquot to avoid repeated freezing and thawing.
<b>Storage Buffer</b>	50 mM Tris-HCl, 10 mM reduced Glutathione, pH=8.0 in the elution buffer.
<b>GENE INFORMATION</b>	
<b>Gene Name</b>	<a href="#">ACP1 acid phosphatase 1, soluble [ Homo sapiens ]</a>
<b>Official Symbol</b>	<a href="#">ACP1</a>
<b>Synonyms</b>	ACP1; acid phosphatase 1, soluble; low molecular weight phosphotyrosine protein phosphatase; LMW-PTP; LMW-PTPase; adipocyte acid phosphatase; red cell acid phosphatase 1; protein tyrosine phosphatase; acid phosphatase of erythrocyte; cytoplasmic phosphotyrosyl protein phosphatase; low molecular weight cytosolic acid phosphatase; HAAP; MGC3499; MGC111030;
<b>Gene ID</b>	<a href="#">52</a>
<b>mRNA Refseq</b>	<a href="#">NM_001040649</a>
<b>Protein Refseq</b>	<a href="#">NP_001035739</a>

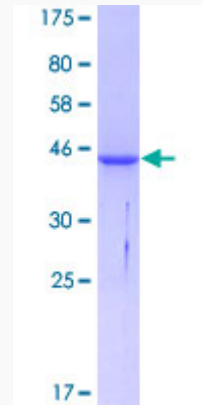
 Tel: 1-631-559-9269 1-516-512-3133

 Email: [info@creative-biomart.com](mailto:info@creative-biomart.com)  Fax: 1-631-938-8127

 45-1 Ramsey Road, Shirley, NY 11967, USA

MIM 171500

UniProt ID P24666



12.5% SDS-PAGE Stained with Coomassie Blue.

Tel: 1-631-559-9269 1-516-512-3133

Email: [info@creative-biomart.com](mailto:info@creative-biomart.com) Fax: 1-631-938-8127

45-1 Ramsey Road, Shirley, NY 11967, USA