

## Recombinant Human ACP1 Protein, His tagged

**Cat. No.** ACP1-4867H    **Lot. No.** (See product label)

### SPECIFICATION

<b>Product Overview</b>	Recombinant Human ACP1 protein(Ala2-His158), fused with C-terminal His tag, was expressed in E. coli.
<b>Species</b>	Human
<b>Source</b>	E.coli
<b>ProteinLength</b>	Ala2-His158
<b>Tag</b>	C-His
<b>Form</b>	Liquid in sterile PBS, pH7.4, 10% Glycerol, 8% Trehalose.
<b>Molecular Mass</b>	The protein has a calculated MW of 20 kDa.
<b>Endotoxin</b>	<1.0EU per 1µg (determined by the LAL method).
<b>Purity</b>	> 90 % as determined by SDS-PAGE.
<b>Storage</b>	Store it under sterile conditions at -20 to -80°C. It is recommended that the protein be aliquoted for optimal storage. Avoid repeated freeze-thaw cycles.
<b>Concentration</b>	0.53 mg/ml. Centrifuge the vial at 4°C before opening to recover the entire contents.
<b>Reconstitution</b>	It is recommended that sterile water be added to the vial to prepare a stock solution of

 Tel: 1-631-559-9269    1-516-512-3133

 Email: [info@creative-biomart.com](mailto:info@creative-biomart.com)     Fax: 1-631-938-8127

 45-1 Ramsey Road, Shirley, NY 11967, USA

0.2 ug/ul. Centrifuge the vial at 4°C before opening to recover the entire contents.

**AA Sequence**

MAEQATKSVLFLVCLGNICRSPIAEAVFRKLVTDQNISENWRVDSAATSGYEIGNPPD  
YRGQSCMKRHGIPMSHVARQITKEDFATFDYILCMDESNLRDLNRKSNQVKTKAKI  
ELLSYDPQKQLIIEDPYYGNDSDFETVYQQCVRCCRAFLEKAHHHHHHHHHHH

## GENE INFORMATION

**Gene Name**

ACP1 acid phosphatase 1, soluble [ Homo sapiens ]

**Official Symbol**

ACP1

**Synonyms**

ACP1; acid phosphatase 1, soluble; low molecular weight phosphotyrosine protein phosphatase; LMW-PTP; LMW-PTPase; adipocyte acid phosphatase; red cell acid phosphatase 1; protein tyrosine phosphatase; acid phosphatase of erythrocyte; cytoplasmic phosphotyrosyl protein phosphatase; low molecular weight cytosolic acid phosphatase; HAAP; MGC3499; MGC111030;

**Gene ID**

52

**mRNA Refseq**

NM\_001040649

**Protein Refseq**

NP\_001035739

**MIM**

171500

**UniProt ID**

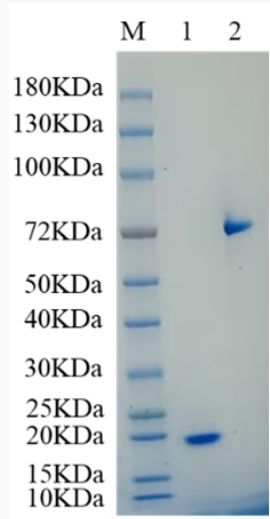
P24666

 Tel: 1-631-559-9269 1-516-512-3133

 Email: [info@creative-biomart.com](mailto:info@creative-biomart.com)  Fax: 1-631-938-8127

 45-1 Ramsey Road, Shirley, NY 11967, USA

**SDS-PAGE**



Lane 1: ACP1-4867H; Lane 2: BSA

 Tel: 1-631-559-9269 1-516-512-3133

 Email: [info@creative-biomart.com](mailto:info@creative-biomart.com)  Fax: 1-631-938-8127

 45-1 Ramsey Road, Shirley, NY 11967, USA