

Active Recombinant Human ACP6 protein, His-tagged

Cat. No. ACP6-0108H **Lot. No.** (See product label)

SPECIFICATION

Product Overview	Active Recombinant Human ACP6 protein(Q9NPH0)(1-428 aa), fused with N-terminal His tag, was expressed in E.coli.
Species	Human
Source	E.coli
ProteinLength	1-428 aa
Form	PBS, pH7.4, containing 0.01% SKL, 1mM DTT, 5% Trehalose and Proclin300.
Bio-activity	Lysophosphatidic acid phosphatase type 6 (ACP6), is a 44-47 kDa monomeric member of the histidine acid phosphatase family of proteins. ACP6 is highly expressed in kidney, heart, small intestine, muscle, liver, prostate, testis, ovary and exists as two isoforms as a result of alternative splicing events. It plays a role in regulating lipid metabolism that hydrolyzes LPA to monoacylglycerol (MAG) and phosphate. Annexin V (ANXA5) binds to phospholipid bilayers, forming two-dimensional crystals that block the phospholipids from availability for coagulation enzyme reactions. A functional binding ELISA assay was conducted to detect the interaction of recombinant human ACP6 and recombinant mouse ANXA5. Briefly, ACP6 was diluted serially in PBS with 0.01% BSA (pH 7.4). Duplicate samples of 100 µl were then transferred to ANXA5-coated microtiter wells and incubated for 1h at 37°C. Wells were washed with PBST and incubated for 1h with anti-ACP6 pAb, then aspirated and washed 3 times. After incubation with HRP labelled secondary antibody

 Tel: 1-631-559-9269 1-516-512-3133

 Email: info@creative-biomart.com  Fax: 1-631-938-8127

 45-1 Ramsey Road, Shirley, NY 11967, USA

for 1h at 37°C, wells were aspirated and washed 5 times. With the addition of substrate solution, wells were incubated 15-25 minutes at 37°C. Finally, add 50 μ stop solution to the wells and read at 450/630 nm immediately. The binding activity of recombinant human ACP6 and recombinant mouse ANXA5 was shown, the EC50 for this effect is 0.08 ug/mL.

Molecular Mass	52.6kDa
Endotoxin	<1.0EU per 1μg (determined by the LAL method).
Purity	> 90%
Storage	Avoid repeated freeze/thaw cycles. Store at 2-8°C for one month. Store at -20°C for 12 months. Aliquot and store at -80°C for 12 months.
Reconstitution	Reconstitute in 10mM PBS (pH7.4) to a concentration of 0.1-1.0 mg/mL. Do not vortex.

GENE INFORMATION

Gene Name	ACP6 acid phosphatase 6, lysophosphatidic [Homo sapiens]
Official Symbol	ACP6
Synonyms	ACP6; acid phosphatase 6, lysophosphatidic; lysophosphatidic acid phosphatase type 6; ACPL1; LPAP; acid phosphatase like 1; acid phosphatase-like protein 1; PACPL1;
Gene ID	51205
mRNA Refseq	NM_016361

 Tel: 1-631-559-9269 1-516-512-3133

 Email: info@creative-biomart.com  Fax: 1-631-938-8127

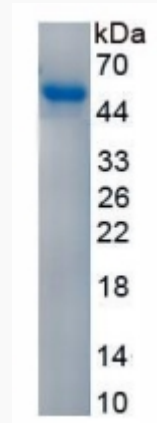
 45-1 Ramsey Road, Shirley, NY 11967, USA

Protein Refseq NP_057445

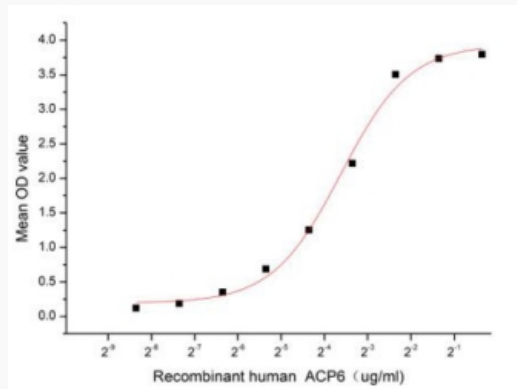
MIM 611471

UniProt ID Q9NPH0

SDS-PAGE



Activity



 Tel: 1-631-559-9269 1-516-512-3133

 Email: info@creative-biomart.com  Fax: 1-631-938-8127

 45-1 Ramsey Road, Shirley, NY 11967, USA