

Recombinant Human ACP6 Protein, GST-Tagged

Cat. No. ACP6-183H **Lot. No.** (See product label)

SPECIFICATION

Product Overview	Human ACP6 full-length ORF (NP_057445.2, 1 a.a. - 428 a.a.) recombinant protein with GST-tag at N-terminal.
Species	Human
Source	Wheat Germ
Description	This gene encodes a member of the histidine acid phosphatase protein family. The encoded protein hydrolyzes lysophosphatidic acid, which is involved in G protein-coupled receptor signaling, lipid raft modulation, and in balancing lipid composition within the cell. Alternative splicing results in multiple transcript variants. [provided by RefSeq, May 2016]
Molecular Mass	75.3 kDa
AA Sequence	MITGVFSMRLWTPVGVLTSLAYCLHQRRVALAELQEADGQCPVDRSLLKMKMVQVV FRHGARSPLKPLPLEEQVEWNPQLLEVPQTQFDYTVTNLAGGPKPYSPYDSQYHE TTLKGGMFAGQLTKVGMQQMFALGERLRKKNYVEDIPFLSPTFNPQEVFIRSTNIFRN LESTRCLLAGLFQCQKEGPIIIHTDEADSEVLYPNYQSCWSLRQRTRGRRQTASLQP GISEDLKKVKDRMGIDSSDKVDFILLDNVAAEQAHNLPSCPMLKRFARMIEQRAVD TSLYILPKEDRESLQMAVGPFLHILESNNLKAMDSATAPDKIRKLYLYAAHDVTFIPLL MTLGIFDHKWPPFAVDLTMELYQHLESKEWFVQLYYHGKEQVPRGCPDGLCPLDM FLNAMS VYTL SPEKYHALCSQTQVMEVGNEE
Applications	Enzyme-linked Immunoabsorbent Assay

 Tel: 1-631-559-9269 1-516-512-3133

 Email: info@creative-biomart.com  Fax: 1-631-938-8127

 45-1 Ramsey Road, Shirley, NY 11967, USA

Western Blot (Recombinant protein)
 Antibody Production
 Protein Array

Notes	Best use within three months from the date of receipt of this protein.
Storage	Store at -80 centigrade. Aliquot to avoid repeated freezing and thawing.
Storage Buffer	50 mM Tris-HCl, 10 mM reduced Glutathione, pH=8.0 in the elution buffer.

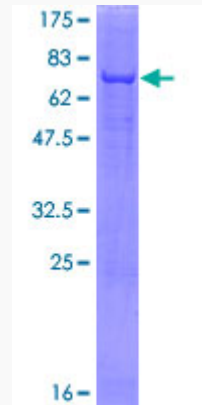
GENE INFORMATION

Gene Name	ACP6 acid phosphatase 6, lysophosphatidic [Homo sapiens]
Official Symbol	ACP6
Synonyms	ACP6; acid phosphatase 6, lysophosphatidic; lysophosphatidic acid phosphatase type 6; ACPL1; LPAP; acid phosphatase like 1; acid phosphatase-like protein 1; PACPL1;
Gene ID	51205
mRNA Refseq	NM_016361
Protein Refseq	NP_057445
MIM	611471
UniProt ID	Q9NPH0

 Tel: 1-631-559-9269 1-516-512-3133

 Email: info@creative-biomart.com  Fax: 1-631-938-8127

 45-1 Ramsey Road, Shirley, NY 11967, USA



12.5% SDS-PAGE Stained with Coomassie Blue.

 Tel: 1-631-559-9269 1-516-512-3133

 Email: info@creative-biomart.com  Fax: 1-631-938-8127

 45-1 Ramsey Road, Shirley, NY 11967, USA