

Recombinant Human ACP6 Protein, Myc/DDK-tagged, C13 and N15-labeled

Cat. No. ACP6-3533H **Lot. No.** (See product label)

SPECIFICATION

Product Overview ACP6 MS Standard C13 and N15-labeled recombinant protein (NP_057445) with a C-terminal MYC/DDK tag, was expressed in HEK293 cells.

Species Human

Source HEK293

Description This gene encodes a member of the histidine acid phosphatase protein family. The encoded protein hydrolyzes lysophosphatidic acid, which is involved in G protein-coupled receptor signaling, lipid raft modulation, and in balancing lipid composition within the cell. Alternative splicing results in multiple transcript variants.

Molecular Mass 48.9 kDa

AA Sequence MITGVFSMRLWTPVGVLTSLAYCLHQRRVALAELQEADGQCPVDRSLLKLMVQVV
 FRHGARSPLKPLPLEEQVEWNPQLLEVPPQTQFDYTVTNLAGGPKPYSPYDSQYHE
 TTLKGGMFAGQLTKVGMQQMFALGERLRKKNYVEDIPFLSPTFNPQEVFIRSTNIFRN
 LESTRCLLAGLFQCQKEGPIIIHTDEADSEVLYPNYQSCWSLRQRTRGRRQTASLQP
 GISEDLKKVKDRMGIDSSDKVDFILLDNVAAEQAHNLPSCPMLKRFARMIEQRAVD
 TSLYILPKEDRESLQMAVGPFHILESNULLKAMDSATAPDKIRKLYLYAAHDVTFIPLL
 MTLGIFDHKWPPFAVDLTMELYQHLESKEWFVQLYYHGKEQVPRGCPDGLCPLDM
 FLNAMSUYTLSPKEYHALCSQTQVMEVGNEETRTRPLEQKLISEEDLAANDILDYKD
 DDDKV

 Tel: 1-631-559-9269 1-516-512-3133

 Email: info@creative-biomart.com  Fax: 1-631-938-8127

 45-1 Ramsey Road, Shirley, NY 11967, USA

Purity	> 80% as determined by SDS-PAGE and Coomassie blue staining
Stability	Stable for 3 months from receipt of products under proper storage and handling conditions.
Storage	Store at -80 centigrade. Avoid repeated freeze-thaw cycles.
Concentration	50 µg/mL as determined by BCA
Storage Buffer	100 mM glycine, 25 mM Tris-HCl, pH 7.3.

GENE INFORMATION

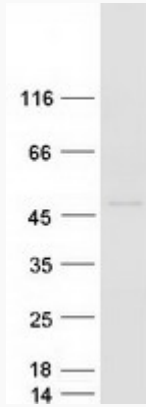
Gene Name	ACP6 acid phosphatase 6, lysophosphatidic [Homo sapiens (human)]
Official Symbol	ACP6
Synonyms	ACP6; acid phosphatase 6, lysophosphatidic; lysophosphatidic acid phosphatase type 6; ACPL1; LPAP; acid phosphatase like 1; acid phosphatase-like protein 1; PACPL1;
Gene ID	51205
mRNA Refseq	NM_016361
Protein Refseq	NP_057445
MIM	611471
UniProt ID	Q9NPH0

 Tel: 1-631-559-9269 1-516-512-3133

 Email: info@creative-biomart.com  Fax: 1-631-938-8127

 45-1 Ramsey Road, Shirley, NY 11967, USA

SDS-PAGE



 Tel: 1-631-559-9269 1-516-512-3133

 Email: info@creative-biomart.com  Fax: 1-631-938-8127

 45-1 Ramsey Road, Shirley, NY 11967, USA