

Recombinant Human ACRV1 Protein, Myc/DDK-tagged, C13 and N15-labeled

Cat. No. ACRV1-2640H **Lot. No.** (See product label)

SPECIFICATION

Product Overview	ACRV1 MS Standard C13 and N15-labeled recombinant protein (NP_064495) with a C-terminal MYC/DDK tag, was expressed in HEK293 cells.
Species	Human
Source	HEK293
Description	This gene encodes a testis-specific, differentiation antigen, acrosomal vesicle protein 1, that arises within the acrosomal vesicle during spermatogenesis, and is associated with the acrosomal membranes and matrix of mature sperm. The acrosomal vesicle protein 1 may be involved in sperm-zona binding or penetration. Alternatively spliced transcript variants have been described.
Molecular Mass	11.2 kDa
AA Sequence	MNRFLLLSLYLLGSARGTSSQPNELSGSIDHQTSVQQLPGTILNCYTCAYMNDQG KCLRGEGTCITQNSQQCMLKKIFEGGKLQFMVQGCENMCPSMNLFSHGTRMQIICC RNQSFCKITRTRPLEQKLISEEDLAANDILDYKDDDDKV
Purity	> 80% as determined by SDS-PAGE and Coomassie blue staining
Stability	Stable for 3 months from receipt of products under proper storage and handling conditions.

 Tel: 1-631-559-9269 1-516-512-3133

 Email: info@creative-biomart.com  Fax: 1-631-938-8127

 45-1 Ramsey Road, Shirley, NY 11967, USA

Storage Store at -80 centigrade. Avoid repeated freeze-thaw cycles.

Concentration 50 µg/mL as determined by BCA

Storage Buffer 100 mM glycine, 25 mM Tris-HCl, pH 7.3.

GENE INFORMATION

Gene Name [ACRV1 acrosomal vesicle protein 1 \[Homo sapiens \(human\) \]](#)

Official Symbol [ACRV1](#)

Synonyms ACRV1; acrosomal vesicle protein 1; acrosomal protein SP-10; D11S4365; SP 10; SPACA2; sperm protein 10; SP-10;

Gene ID [56](#)

mRNA Refseq [NM_020110](#)

Protein Refseq [NP_064495](#)

MIM [102525](#)

UniProt ID [P26436](#)

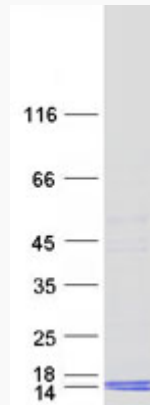
 Tel: 1-631-559-9269 1-516-512-3133

 Email: info@creative-biomart.com  Fax: 1-631-938-8127

 45-1 Ramsey Road, Shirley, NY 11967, USA



SDS-PAGE



Tel: 1-631-559-9269 1-516-512-3133

Email: info@creative-biomart.com Fax: 1-631-938-8127

45-1 Ramsey Road, Shirley, NY 11967, USA