

Recombinant Human ACSF2 Protein, GST-tagged

Cat. No. ACSF2-193H **Lot. No.** (See product label)

SPECIFICATION

Product Overview	Human ACSF2 full-length ORF (NP_079425.2, 1 a.a. - 615 a.a.) recombinant protein with GST-tag at N-terminal.
Species	Human
Source	Wheat Germ
Description	ACSF2 (Acyl-CoA Synthetase Family Member 2) is a Protein Coding gene. Among its related pathways are Metabolism and Mitochondrial LC-Fatty Acid Beta-Oxidation. GO annotations related to this gene include ligase activity. An important paralog of this gene is ACSF3.
Molecular Mass	94.6 kDa
AA Sequence	<p>MAVYVGMRLRLGRLCAGSSGVLGARAALSRSWQEARLQGVRFLSSREVDRMVSTPI GGLSYVQGCTKKHLNSKTVVQCLETTAQRVPEREALVVLHEDVRLTFAQLKEEVDK AASGLLSIGLCKGDRLLGMWGPNSYAWVLMQLATAQAGIILVSVNPAYQAMELEYVL KKVGCKALVFPKQFKTQQYYNVLKQICPEVENAQPALKSQRLPDLTTVISVDAPLP GTLILLDEVAAGSTRQHLDQLQYNQQFLSCHDPINIQFTSGTTGSPKGATLSHYNIV NNSNILGERLKLHEKTPEQLRMILPNPLYHCLGSVAGTMMCLMYGATLILASPIFNGK KALEAISRERGTFLYGTPTMFVDILNQPDPSSYDISTMCGGVIAGSPAPPELIRAIINKI NMKDLVVAYGTTENSPVTFAHFPEDTVEQKAESVGRIMPHTEARIMNMEAGTLAKL NTPGELCIRGYCVMLGYWGEPQKTEEAVDQDKWYWTGDVATMNEQGFCCKIVGRS KDMIIRGGENIYPAELEDFHHTHPKVQEVQVVGKDDRMGEEICACIRLKDGEETT</p>

 Tel: 1-631-559-9269 1-516-512-3133

 Email: info@creative-biomart.com  Fax: 1-631-938-8127

 45-1 Ramsey Road, Shirley, NY 11967, USA

EEIKAFCKGKISHFKIPKYIVFVTNYPLTISGKIQKFKLREQMERHLNL

Applications

Enzyme-linked Immunoabsorbent Assay
 Western Blot (Recombinant protein)
 Antibody Production
 Protein Array

Notes

Best use within three months from the date of receipt of this protein.

Storage

Store at -80 centigrade. Aliquot to avoid repeated freezing and thawing.

Storage Buffer

50 mM Tris-HCl, 10 mM reduced Glutathione, pH=8.0 in the elution buffer.

GENE INFORMATION

Gene Name

[ACSF2 acyl-CoA synthetase family member 2 \[Homo sapiens \]](#)

Official Symbol

[ACSF2](#)

Synonyms

ACSF2; acyl-CoA synthetase family member 2; acyl-CoA synthetase family member 2, mitochondrial; ACSMW; FLJ20920; PPARG binding, long chain fatty acid acyl Co-A ligase like; AVYV493;

Gene ID

[80221](#)

mRNA Refseq

[NM_025149](#)

Protein Refseq

[NP_079425](#)

MIM

[610465](#)

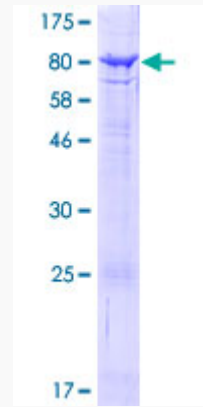
 Tel: 1-631-559-9269 1-516-512-3133

 Email: info@creative-biomart.com  Fax: 1-631-938-8127

 45-1 Ramsey Road, Shirley, NY 11967, USA

UniProt ID

Q96CM8



12.5% SDS-PAGE Stained with Coomassie Blue.

 Tel: 1-631-559-9269 1-516-512-3133

 Email: info@creative-biomart.com  Fax: 1-631-938-8127

 45-1 Ramsey Road, Shirley, NY 11967, USA