

Recombinant Human ACSS2 Protein, GST-tagged

Cat. No. ACSS2-210H Lot. No. (See product label)

SPECIFICATION

Product Overview	Human ACSS2 partial ORF (NP_061147.1, 32 a.a. - 130 a.a.) recombinant protein with GST-tag at N-terminal.
Species	Human
Source	Wheat Germ
Description	This gene encodes a cytosolic enzyme that catalyzes the activation of acetate for use in lipid synthesis and energy generation. The protein acts as a monomer and produces acetyl-CoA from acetate in a reaction that requires ATP. Expression of this gene is regulated by sterol regulatory element-binding proteins, transcription factors that activate genes required for the synthesis of cholesterol and unsaturated fatty acids. Alternative splicing results in multiple transcript variants. [provided by RefSeq, Jul 2009]
Molecular Mass	36.63 kDa
AA Sequence	PPEVSRSAHVPSLQRYRELHRRSVVEEPREFWGDIAKEFYWKTPCPGPFLRYNFDVT K GKIFIEWMKGATTNICYNVLDNRNVHEKKLGDKVAFYWEGNEP
Applications	Enzyme-linked Immunoabsorbent Assay Western Blot (Recombinant protein) Antibody Production Protein Array

 Tel: 1-631-559-9269 1-516-512-3133

 Email: info@creative-biomart.com  Fax: 1-631-938-8127

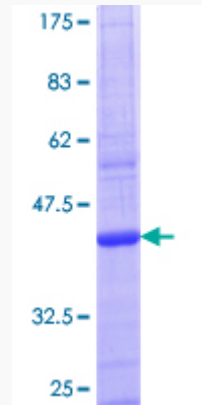
 45-1 Ramsey Road, Shirley, NY 11967, USA

Notes	Best use within three months from the date of receipt of this protein.
Storage	Store at -80 centigrade. Aliquot to avoid repeated freezing and thawing.
Storage Buffer	50 mM Tris-HCl, 10 mM reduced Glutathione, pH=8.0 in the elution buffer.
GENE INFORMATION	
Gene Name	ACSS2 acyl-CoA synthetase short-chain family member 2 [Homo sapiens]
Official Symbol	ACSS2
Synonyms	ACSS2; acyl-CoA synthetase short-chain family member 2; ACAS2, acetyl Coenzyme A synthetase 2 (ADP forming); acetyl-coenzyme A synthetase, cytoplasmic; AceCS; ACS; ACSA; dJ1161H23.1; acetate thiokinase; acetate-CoA ligase; acyl-activating enzyme; cytoplasmic acetyl-coenzyme A synthetase; acetyl-Coenzyme A synthetase 2 (ADP forming); ACAS2; ACECS; DKFZp762G026;
Gene ID	55902
mRNA Refseq	NM_001076552
Protein Refseq	NP_001070020
MIM	605832
UniProt ID	Q9NR19

 Tel: 1-631-559-9269 1-516-512-3133

 Email: info@creative-biomart.com  Fax: 1-631-938-8127

 45-1 Ramsey Road, Shirley, NY 11967, USA



12.5% SDS-PAGE Stained with Coomassie Blue.

 Tel: 1-631-559-9269 1-516-512-3133

 Email: info@creative-biomart.com  Fax: 1-631-938-8127

 45-1 Ramsey Road, Shirley, NY 11967, USA