

Recombinant Human ACTA1 protein, His-tagged

Cat. No. ACTA1-305H **Lot. No.** (See product label)

SPECIFICATION

Product Overview	Recombinant Human ACTA1 protein(NP_001091.1)(1-377 aa), fused to His tag, was expressed in E. coli.
Species	Human
Source	E.coli
ProteinLength	1-377 aa
Form	The purified protein was Lyophilized from sterile PBS (58mM Na ₂ HPO ₄ , 17mM NaH ₂ PO ₄ , 68mM NaCl, pH7.). 5 % trehalose and 5 % mannitol are added as protectants before lyophilization.
AA Sequence	MCDEDETTALVCDNGSGLVKAGFAGDDAPRAVFPSIVGRPRHQGVMMGMGQKDS YVGDEAQSKRGILTLKYPIEHGIITNWDDMEKIWHHTFYNELRVAPPEHPTLLTEAPL NPKANREKMTQIMFETFNVPAMYVAIQAVLSLYASGRTTGIVLDSGDGVTHNVPIYE GYALPHAIMRLDLAGRDLTDYLMKILTERGYSFVTTAEREIVRDIKEKLCYVALDFENE MATAASSSSLEKSYELPDGQVITIGNERFRCPETLFQPSFIGMESAGIHETTYNSIMK CDIDIRKDLYANNVMSGGTTMYPGIADRMQKEITALAPSTMKIKIIPPERKYSVWIGG SILASLSTFQQMWITKQEYDEAGPSIVHRKCF
Purity	85%, by SDS-PAGE with Coomassie Brilliant Blue staining.
Storage	Short-term storage: Store at 2-8°C for (1-2 weeks). Long-term storage: Aliquot and store at -20°C to -80°C for up to 3 months, buffer

 Tel: 1-631-559-9269 1-516-512-3133

 Email: info@creative-biomart.com  Fax: 1-631-938-8127

 45-1 Ramsey Road, Shirley, NY 11967, USA

containing 50% glycerol is recommended for reconstitution. Avoid repeat freeze-thaw cycles.

Reconstitution

Reconstitute at 0.25 g/μl in 200 μl sterile water for short-term storage.
Reconstitution with 200 μl 50% glycerol solution is recommended for longer term storage (see Stability and Storage for more details).

If a different concentration is needed for your purposes please adjust the reconstitution volume as required (please note: the ion concentration of the final solution will vary according to the volume used).

Note: Centrifuge vial before opening. When reconstituting, gently pipet and wash down the sides of the vial to ensure full recovery of the protein into solution.

GENE INFORMATION

Gene Name	ACTA1 actin, alpha 1, skeletal muscle [Homo sapiens]
Official Symbol	ACTA1
Synonyms	ACTA1; actin, alpha 1, ACTA; ASMA; CFTD; MPFD; NEM1; NEM2; NEM3; CFTD1; CFTDM;
Gene ID	58
mRNA Refseq	NM_001100.3
Protein Refseq	NP_001091.1
MIM	102610
UniProt ID	P68133

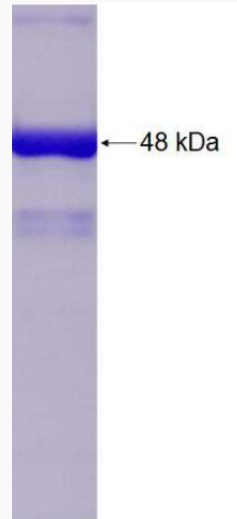
 Tel: 1-631-559-9269 1-516-512-3133

 Email: info@creative-biomart.com  Fax: 1-631-938-8127

 45-1 Ramsey Road, Shirley, NY 11967, USA



SDS-PAGE



Tel: 1-631-559-9269 1-516-512-3133

Email: info@creative-biomart.com Fax: 1-631-938-8127

45-1 Ramsey Road, Shirley, NY 11967, USA