

Native Rabbit ACTA1 Protein

Cat. No. ACTA1-853R **Lot. No.** (See product label)

SPECIFICATION

| | |
|-------------------------|--|
| Product Overview | Native Rabbit ACTA1 was purified from Rabbit skeletal muscle. |
| Species | Rabbit |
| Source | Rabbit skeletal muscle |
| ProteinLength | 375 amino acids |
| Form | 2mM Tris-Cl pH 8.2, 0.4mM ATP, 0.5mM DTT, 0.1mM CaCl ₂ , 1mM NaN ₃ and 0.3% disaccharides, when reconstituted with 1.0 ml ultrapure water to obtain a 1mg/ml solution. |
| Molecular Mass | 42kDa |
| Purity | >99% by scanning densitometry. |

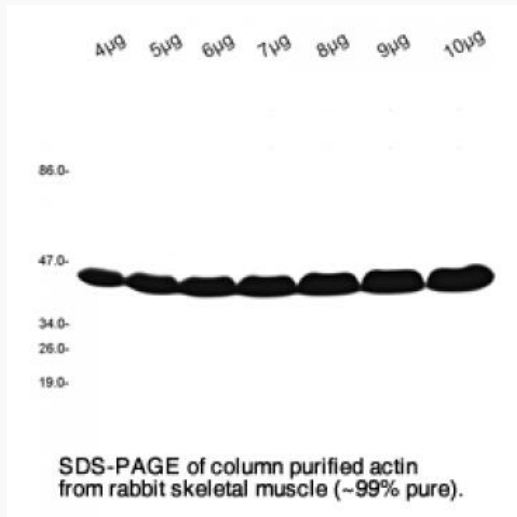
GENE INFORMATION

| | |
|------------------------|---|
| Gene Name | ACTA1 actin, alpha 1, skeletal muscle [<i>Oryctolagus cuniculus</i>] |
| Official Symbol | ACTA1 |
| Synonyms | ACTA; Actin, alpha skeletal muscle; Alpha-actin-1; cytoplasmic beta-actin |
| Gene ID | 100009506 |

 Tel: 1-631-559-9269 1-516-512-3133

 Email: info@creative-biomart.com  Fax: 1-631-938-8127

 45-1 Ramsey Road, Shirley, NY 11967, USA



Tel: 1-631-559-9269 1-516-512-3133

Email: info@creative-biomart.com Fax: 1-631-938-8127

45-1 Ramsey Road, Shirley, NY 11967, USA