

Recombinant Human ACTA2 Protein, GST-tagged

Cat. No. ACTA2-212H Lot. No. (See product label)

SPECIFICATION

Product Overview	Human ACTA2 full-length ORF (AAH17554.1, 1 a.a. - 377 a.a.) recombinant protein with GST-tag at N-terminal.
Species	Human
Source	Wheat Germ
Description	<p>The protein encoded by this gene belongs to the actin family of proteins, which are highly conserved proteins that play a role in cell motility, structure and integrity. Alpha, beta and gamma actin isoforms have been identified, with alpha actins being a major constituent of the contractile apparatus, while beta and gamma actins are involved in the regulation of cell motility. This actin is an alpha actin that is found in skeletal muscle. Defects in this gene cause aortic aneurysm familial thoracic type 6. Multiple alternatively spliced variants, encoding the same protein, have been identified. [provided by RefSeq, Nov 2008]</p>
Molecular Mass	67.21 kDa
AA Sequence	<p>MCEEDSTALVCDNGSGLCKAGFAGDDAPRAVFPSSIVGRPRHQGVMVGMGQKDS YVGDEAQSKRGILTLKYPIEHGIITNWDDMEKIWHHSFYNELRVAPEEHPTLLTEAPL NPKANREKMTQIMFETFNVPAMYVAIQAVLSLYASGRTTGIVLDSGDGVTHNVPIYE GYALPHAIMRLDLAGRDLTDYLMKILTERGYSFVTTAEREIVRDIKEKLCYVALDFENE MATAASSSSLEKSYELPDGQVITIGNERFRCPETLFQPSFIGMESAGIHETTYNSIMK CDIDIRKDLYANNVLSGGTTMYPGIADRMQKEITALAPSTMKIKIIPPERKYSVWIGG</p>

 Tel: 1-631-559-9269 1-516-512-3133

 Email: info@creative-biomart.com  Fax: 1-631-938-8127

 45-1 Ramsey Road, Shirley, NY 11967, USA

SILASLSTFQQMWISKQEYDEAGPSIVHRKCF

Applications

Enzyme-linked Immunoabsorbent Assay
 Western Blot (Recombinant protein)
 Antibody Production
 Protein Array

Notes

Best use within three months from the date of receipt of this protein.

Storage

Store at -80 centigrade. Aliquot to avoid repeated freezing and thawing.

Storage Buffer

50 mM Tris-HCl, 10 mM reduced Glutathione, pH=8.0 in the elution buffer.

GENE INFORMATION

Gene Name

[ACTA2 actin, alpha 2, smooth muscle, aorta \[Homo sapiens \]](#)

Official Symbol

[ACTA2](#)

Synonyms

ACTA2; actin, alpha 2, smooth muscle, aorta; actin, aortic smooth muscle; ACTSA; alpha 2 actin; alpha-actin-2; alpha-cardiac actin; growth-inhibiting gene 46; cell growth-inhibiting gene 46 protein; AAT6; MYMY5;

Gene ID

[59](#)

mRNA Refseq

[NM_001141945](#)

Protein Refseq

[NP_001135417](#)

MIM

[102620](#)

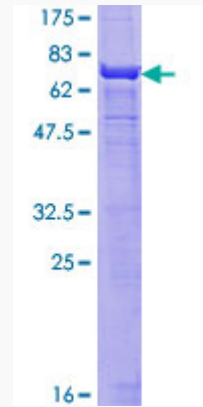
 Tel: 1-631-559-9269 1-516-512-3133

 Email: info@creative-biomart.com  Fax: 1-631-938-8127

 45-1 Ramsey Road, Shirley, NY 11967, USA

UniProt ID

P62736



12.5% SDS-PAGE Stained with Coomassie Blue.

 Tel: 1-631-559-9269 1-516-512-3133

 Email: info@creative-biomart.com  Fax: 1-631-938-8127

 45-1 Ramsey Road, Shirley, NY 11967, USA