

# Recombinant Human ACTB Protein, MYC/DDK-tagged, C13 and N15-labeled

**Cat. No.** ACTB-074H    **Lot. No.** (See product label)

## SPECIFICATION

### Product Overview

ACTB MS Standard C13 and N15-labeled recombinant protein (NP\_001092) with a C-terminal MYC/DDK tag, was expressed in HEK293 cells.

### Species

Human

### Source

HEK293

### Description

This gene encodes one of six different actin proteins. Actins are highly conserved proteins that are involved in cell motility, structure, integrity, and intercellular signaling. The encoded protein is a major constituent of the contractile apparatus and one of the two nonmuscle cytoskeletal actins that are ubiquitously expressed. Mutations in this gene cause Baraitser-Winter syndrome 1, which is characterized by intellectual disability with a distinctive facial appearance in human patients. Numerous pseudogenes of this gene have been identified throughout the human genome.

### Molecular Mass

41.6 kDa

### AA Sequence

MDDIAALVVDNGSGMCKAGFAGDDAPRAVFPVGRPRHQGVMVGMGQKDSYV  
 GDEAQSQRGILTLKYPIEHGIVTNWDDMEKIWHHTFYNELRVAPEEHPVLLTEAPLNP  
 KANREKMTQIMFETFNTPAMYVAIQAVLSLYASGRRTGIVMDSGDGVTHTVPIYEGY  
 ALPHAILRLDLAGRDLTDYLMKILTERGYSFTTTAEREIVRDIKEKLCYVALDFEQEMA  
 TAASSSSLEKSYELPDGQVITIGNERFRCPEALFQPSFLGMESCGIHETTFFNSIMKCD  
 VDIRKDLYANTVLSSGGTTMYPGIADRMQKEITALAPSTMKIKIIPPERKYSVWIGGSIL

 Tel: 1-631-559-9269    1-516-512-3133

 Email: [info@creative-biomart.com](mailto:info@creative-biomart.com)     Fax: 1-631-938-8127

 45-1 Ramsey Road, Shirley, NY 11967, USA

	ASLSTFQQMWISKQEYDESGPSIVHRKCFTRTRPLeQKLISEEDLAANDILDYKDDD DKV
<b>Purity</b>	> 80% as determined by SDS-PAGE and Coomassie blue staining
<b>Stability</b>	Stable for 3 months from receipt of products under proper storage and handling conditions.
<b>Storage</b>	Store at -80 centigrade. Avoid repeated freeze-thaw cycles.
<b>Concentration</b>	50 µg/mL as determined by BCA
<b>Storage Buffer</b>	100 mM glycine, 25 mM Tris-HCl, pH 7.3.

## GENE INFORMATION

<b>Gene Name</b>	ACTB actin beta [ <a href="#">Homo sapiens (human)</a> ]
<b>Official Symbol</b>	<a href="#">ACTB</a>
<b>Synonyms</b>	ACTB; actin beta; BRWS1; PS1TP5BP1; actin, cytoplasmic 1; I(2)-actin; PS1TP5-binding protein 1; beta cytoskeletal actin
<b>Gene ID</b>	<a href="#">60</a>
<b>mRNA Refseq</b>	<a href="#">NM_001101</a>
<b>Protein Refseq</b>	<a href="#">NP_001092</a>
<b>MIM</b>	<a href="#">102630</a>

 Tel: 1-631-559-9269 1-516-512-3133

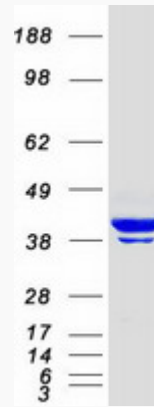
 Email: [info@creative-biomart.com](mailto:info@creative-biomart.com)  Fax: 1-631-938-8127

 45-1 Ramsey Road, Shirley, NY 11967, USA

UniProt ID

P60709

SDS-PAGE



 Tel: 1-631-559-9269 1-516-512-3133

 Email: [info@creative-biomart.com](mailto:info@creative-biomart.com)  Fax: 1-631-938-8127

 45-1 Ramsey Road, Shirley, NY 11967, USA