

Recombinant Full Length Human ACTB Protein, C-Flag-tagged

Cat. No. ACTB-28HFL Lot. No. (See product label)

SPECIFICATION

Product Overview	Recombinant Full Length Human ACTB Protein, fused to Flag-tag at C-terminus, was expressed in Mammalian cells.
Species	Human
Source	Mammalian Cells
Description	This gene encodes one of six different actin proteins. Actins are highly conserved proteins that are involved in cell motility, structure, integrity, and intercellular signaling. The encoded protein is a major constituent of the contractile apparatus and one of the two nonmuscle cytoskeletal actins that are ubiquitously expressed. Mutations in this gene cause Baraitser-Winter syndrome 1, which is characterized by intellectual disability with a distinctive facial appearance in human patients. Numerous pseudogenes of this gene have been identified throughout the human genome.
Form	25 mM Tris HCl, pH 7.3, 100 mM glycine, 10% glycerol.
Molecular Mass	41.6 kDa
AA Sequence	MDDDIAALVVDNGSGMCKAGFAGDDAPRAVFPSIVGRPRHQGVMVGMGQKDSYV GDEAQSQRGILTLYKYP IEHGIVTNWDDMEKIWHHTFYNELRVAPEEHPVLLTEAPLN PKANREKMTQIMFETFNTPAMYVAIQAVL SLYASGRRTTGIVMDSGDGVTHTVPIYEG YALPHAILRLDLAGRDLTDYLMKILTERGYSFTTTAEREIVR DIKEKLCYVALDFEQEM ATAASSSSLEKSYELPDGQVITIGNERFRCPEALFQPSFLGMESCGIHETTFN SIMKC DVIDRKDLYANTVLSGGTTMYPGIADRMQKEITALAPSTMKIKIIPPERKYSVWIGGS

 Tel: 1-631-559-9269 1-516-512-3133

 Email: info@creative-biomart.com  Fax: 1-631-938-8127

 45-1 Ramsey Road, Shirley, NY 11967, USA

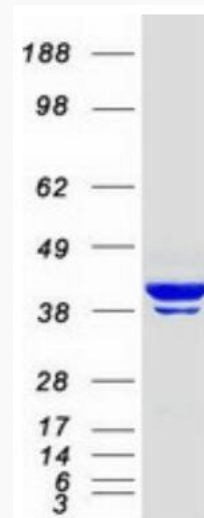
	<p>ILASLS</p> <p>TFQQMWISKQEYDESGPSIVHRKCFTRTRPLEQKLISEEDLAANDILDYKDDDDKV</p>
Purity	> 80% as determined by SDS-PAGE and Coomassie blue staining.
Stability	Stable for 12 months from the date of receipt of the product under proper storage and handling conditions. Avoid repeated freeze-thaw cycles.
Storage	Store at -80 centigrade.
Concentration	>50 ug/mL as determined by microplate BCA method.
Preparation	Recombinant protein was captured through anti-DDK affinity column followed by conventional chromatography steps.
Protein Families	ES Cell Differentiation/IPS
Protein Pathways	Adherens junction, Arrhythmogenic right ventricular cardiomyopathy (ARVC), Dilated cardiomyopathy, Focal adhesion, Hypertrophic cardiomyopathy (HCM), Leukocyte transendothelial migration, Pathogenic Escherichia coli infection, Regulation of actin cytoskeleton, Tight junction, Vibrio cholerae infection, Viral myocarditis
Full Length	Full L.
GENE INFORMATION	
Gene Name	ACTB actin beta [Homo sapiens (human)]
Official Symbol	ACTB
Synonyms	BRWS1; PS1TP5BP1

 Tel: 1-631-559-9269 1-516-512-3133

 Email: info@creative-biomart.com  Fax: 1-631-938-8127

 45-1 Ramsey Road, Shirley, NY 11967, USA

Gene ID	60
mRNA Refseq	NM_001101.5
Protein Refseq	NP_001092.1
MIM	102630
UniProt ID	P60709



Coomassie blue staining of purified ACTB protein.

Tel: 1-631-559-9269 1-516-512-3133

Email: info@creative-biomart.com Fax: 1-631-938-8127

45-1 Ramsey Road, Shirley, NY 11967, USA