

## Recombinant Human ACTC1 Protein (Asp156-Gly368), N-His-tagged

Cat. No. ACTC1-0195H Lot. No. (See product label)

### SPECIFICATION

<b>Product Overview</b>	Recombinant human ACTC1 (Asp156-Gly368) was fused with the N-His tag and was expressed in E. coli.
<b>Species</b>	Human
<b>Source</b>	E.coli
<b>ProteinLength</b>	Asp156-Gly368
<b>Form</b>	Lyophilized powder/frozen liquid
<b>Molecular Mass</b>	26.13 kDa
<b>Purity</b>	>90% as determined by SDS-PAGE
<b>Notes</b>	For research use only.
<b>Storage</b>	Use a manual defrost freezer and avoid repeated freeze thaw cycles. Store at 2 to 8 centigrade for one week. Store at -20 to -80 centigrade for twelve months from the date of receipt.
<b>Storage Buffer</b>	0.01M PBS, pH 7.4, 0.02% NLS
<b>Reconstitution</b>	Reconstitute in sterile water for a stock solution.

 Tel: 1-631-559-9269 1-516-512-3133

 Email: [info@creative-biomart.com](mailto:info@creative-biomart.com)  Fax: 1-631-938-8127

 45-1 Ramsey Road, Shirley, NY 11967, USA

**Shipping**

They are shipped out with dry ice/blue ice unless customers require otherwise.

**GENE INFORMATION**
**Gene Name**

ACTC1 actin, alpha, cardiac muscle 1 [ Homo sapiens (human) ]

**Official Symbol**

ACTC1

**Synonyms**

ACTC1; actin, alpha, cardiac muscle 1; ACTC, actin, alpha, cardiac muscle; actin, alpha cardiac muscle 1; CMD1R; alpha-cardiac actin; ACTC; ASD5; CMH11; LVNC4;

**Gene ID**

70

**mRNA Refseq**

NM\_005159

**Protein Refseq**

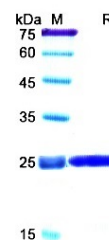
NP\_005150

**MIM**

102540


**UniProt ID**

P68032

**SDS-PAGE**


 Tel: 1-631-559-9269 1-516-512-3133

 Email: [info@creative-biomart.com](mailto:info@creative-biomart.com)  Fax: 1-631-938-8127

 45-1 Ramsey Road, Shirley, NY 11967, USA