

Recombinant Full Length Human ACTC1 Protein, C-Flag-tagged

Cat. No. ACTC1-1209HFL **Lot. No.** (See product label)

SPECIFICATION

Product Overview	Recombinant Full Length Human ACTC1 Protein, fused to Flag-tag at C-terminus, was expressed in Mammalian cells.
Species	Human
Source	Mammalian Cells
Description	Actins are highly conserved proteins that are involved in various types of cell motility. Polymerization of globular actin (G-actin) leads to a structural filament (F-actin) in the form of a two-stranded helix. Each actin can bind to four others. The protein encoded by this gene belongs to the actin family which is comprised of three main groups of actin isoforms, alpha, beta, and gamma. The alpha actins are found in muscle tissues and are a major constituent of the contractile apparatus. Defects in this gene have been associated with idiopathic dilated cardiomyopathy (IDC) and familial hypertrophic cardiomyopathy (FHC).
Form	25 mM Tris HCl, pH 7.3, 100 mM glycine, 10% glycerol.
Molecular Mass	41.8 kDa
AA Sequence	MCDDEETTALVCDNGSGLVKAGFAGDDAPRAVFPSIVGRPRHQGVMVGMGQKDS YVGDEAQSKRGILTLYPIEHGIITNWDDMEKIWHHTFYNELRVAPEEHPTLLTEAPL NPKANREKMTQIMFETFNVPAMYVAIQA VLSLYASGRTTGIVLDSGDGVTHNVPIYE GYALPHAIMRLDLAGRDLTDYLMKILTERGYSFVTTAEREI VRDIKEKLCYVALDFEN

 Tel: 1-631-559-9269 1-516-512-3133

 Email: info@creative-biomart.com  Fax: 1-631-938-8127

 45-1 Ramsey Road, Shirley, NY 11967, USA

EMATAASSSSLEKSYELPDGQVITIGNERFRCPETLFQPSFIGMESAGIHETT YNSIM
 KCDIDIRKDLYANNVLSGGTTMYPGIADRMQKEITALAPSTMKIKIIPPERKYSVWIG
 GSILAS
 LSTFQQMWISKQEYDEAGPSIVHRKCFTRTRPLEQKLISEEDLAANDILDYKDDDDK
 V

Purity > 80% as determined by SDS-PAGE and Coomassie blue staining.

Stability Stable for 12 months from the date of receipt of the product under proper storage and handling conditions. Avoid repeated freeze-thaw cycles.

Storage Store at -80 centigrade.

Concentration >50 ug/mL as determined by microplate BCA method.

Preparation Recombinant protein was captured through anti-DDK affinity column followed by conventional chromatography steps.

Protein Pathways Cardiac muscle contraction, Dilated cardiomyopathy, Hypertrophic cardiomyopathy (HCM)

Full Length Full L.

GENE INFORMATION

Gene Name ACTC1 actin alpha cardiac muscle 1 [Homo sapiens (human)]

Official Symbol ACTC1

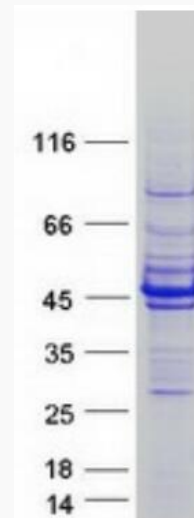
Synonyms ACTC; ASD5; CMD1R; CMH11; LVNC4

 Tel: 1-631-559-9269 1-516-512-3133

 Email: info@creative-biomart.com  Fax: 1-631-938-8127

 45-1 Ramsey Road, Shirley, NY 11967, USA

Gene ID	70
mRNA Refseq	NM_005159.5
Protein Refseq	NP_005150.1
MIM	102540
UniProt ID	P68032



Coomassie blue staining of purified ACTC1 protein.

Tel: 1-631-559-9269 1-516-512-3133

Email: info@creative-biomart.com Fax: 1-631-938-8127

45-1 Ramsey Road, Shirley, NY 11967, USA