

Recombinant Human ACTC1 Protein, Myc/DDK-tagged, C13 and N15-labeled

Cat. No. ACTC1-1705H **Lot. No.** (See product label)

SPECIFICATION

Product Overview	ACTC1 MS Standard C13 and N15-labeled recombinant protein (NP_005150) with a C-terminal MYC/DDK tag, was expressed in HEK293 cells.
Species	Human
Source	HEK293
Description	Actins are highly conserved proteins that are involved in various types of cell motility. Polymerization of globular actin (G-actin) leads to a structural filament (F-actin) in the form of a two-stranded helix. Each actin can bind to four others. The protein encoded by this gene belongs to the actin family which is comprised of three main groups of actin isoforms, alpha, beta, and gamma. The alpha actins are found in muscle tissues and are a major constituent of the contractile apparatus. Defects in this gene have been associated with idiopathic dilated cardiomyopathy (IDC) and familial hypertrophic cardiomyopathy (FHC).
Molecular Mass	42 kDa
AA Sequence	MCDDEETTALVCDNGSGLVKAGFAGDDAPRAVFPSIVGRPRHQGVMVGMGQKDS YVGDEAQSKRGILTLYPIEHGIITNWDDMEKIWHHTFYNELRVAPEEHPTLLTEAPL NPKANREKMTQIMFETFNVPAMYVAIQAVLSLYASGRRTTGIVLDSGDGVTHNVPIYE GYALPHAIMRLDLAGRDLTDYLMKILTERGYSFVTTAEREIVRDIKEKLCYVALDFENE MATAASSSSLEKSYELPDGQVITIGNERFRCPETLFQPSFIGMESAGIHETTYNSIMK

 Tel: 1-631-559-9269 1-516-512-3133

 Email: info@creative-biomart.com  Fax: 1-631-938-8127

 45-1 Ramsey Road, Shirley, NY 11967, USA

CDIDIRKDLYANNVLSGGTTMYPGIADRMQKEITALAPSTMKIKIIPPERKYSVWIGG
 SILASLSTFQQMWISKQEYDEAGPSIVHRKCFTRTRPLEQKLISEEDLAANDILDYKD
 DDDKV

Purity > 80% as determined by SDS-PAGE and Coomassie blue staining

Stability Stable for 3 months from receipt of products under proper storage and handling conditions.

Storage Store at -80 centigrade. Avoid repeated freeze-thaw cycles.

Concentration 50 µg/mL as determined by BCA

Storage Buffer 100 mM glycine, 25 mM Tris-HCl, pH 7.3.

GENE INFORMATION

Gene Name ACTC1 actin alpha cardiac muscle 1 [Homo sapiens (human)]

Official Symbol ACTC1

Synonyms ACTC1; actin, alpha, cardiac muscle 1; ACTC, actin, alpha, cardiac muscle; actin, alpha cardiac muscle 1; CMD1R; alpha-cardiac actin; ACTC; ASD5; CMH11; LVNC4;

Gene ID 70

mRNA Refseq NM_005159

Protein Refseq NP_005150

MIM 102540

 Tel: 1-631-559-9269 1-516-512-3133

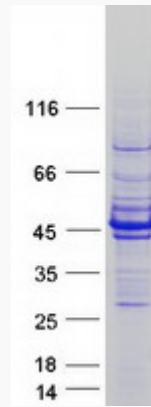
 Email: info@creative-biomart.com  Fax: 1-631-938-8127

 45-1 Ramsey Road, Shirley, NY 11967, USA

UniProt ID

P68032

SDS-PAGE



 Tel: 1-631-559-9269 1-516-512-3133

 Email: info@creative-biomart.com  Fax: 1-631-938-8127

 45-1 Ramsey Road, Shirley, NY 11967, USA