

Recombinant Human ACTC1 Protein, GST-tagged

Cat. No. ACTC1-214H Lot. No. (See product label)

SPECIFICATION

Product Overview	Human ACTC full-length ORF (AAH09978.1, 1 a.a. - 377 a.a.) recombinant protein with GST-tag at N-terminal.
Species	Human
Source	Wheat Germ
Description	Actins are highly conserved proteins that are involved in various types of cell motility. Polymerization of globular actin (G-actin) leads to a structural filament (F-actin) in the form of a two-stranded helix. Each actin can bind to four others. The protein encoded by this gene belongs to the actin family which is comprised of three main groups of actin isoforms, alpha, beta, and gamma. The alpha actins are found in muscle tissues and are a major constituent of the contractile apparatus. Defects in this gene have been associated with idiopathic dilated cardiomyopathy (IDC) and familial hypertrophic cardiomyopathy (FHC). [provided by RefSeq, Jul 2008]
Molecular Mass	68.4 kDa
AA Sequence	MCDDEETTALVCDNGSGLVKAGFAGDDAPRAVFPSSIVGRPRHQGVVMGMGQKDS YVGDEAQSKRGILTLKYPIEHGIITNWDDMEKIWHHTFYNELRVAPEEHPTLLTEAPL NPKANREKMTQIMFETFNVPAMYVAIQAVLSLYASGRTTGIVLDSGDGVTHNVPIYE GYALPHAIMRLDLAGRDLTDYLMKILTERGYSFVTTAEREIVRDIKEKLCYVALDFENE MATAASSSSLEKSYELPDGQVITIGNERFRCPETLFQPSFIGMESAGIHETTYNSIMK CDIDIRKDL YANNVL SGGTTMYPGIADRMQKEITALAPSTMKIKIIPPERKYSVWIGG

 Tel: 1-631-559-9269 1-516-512-3133

 Email: info@creative-biomart.com  Fax: 1-631-938-8127

 45-1 Ramsey Road, Shirley, NY 11967, USA

SILASLSTFQQMWISKQEYDEAGPSIVHRKCF

Applications

Enzyme-linked Immunoabsorbent Assay
 Western Blot (Recombinant protein)
 Antibody Production
 Protein Array

Notes

Best use within three months from the date of receipt of this protein.

Storage

Store at -80 centigrade. Aliquot to avoid repeated freezing and thawing.

Storage Buffer

50 mM Tris-HCl, 10 mM reduced Glutathione, pH=8.0 in the elution buffer.

GENE INFORMATION

Gene Name

[ACTC1 actin, alpha, cardiac muscle 1 \[Homo sapiens \]](#)

Official Symbol

[ACTC1](#)

Synonyms

ACTC1; actin, alpha, cardiac muscle 1; ACTC, actin, alpha, cardiac muscle; actin, alpha cardiac muscle 1; CMD1R; alpha-cardiac actin; ACTC; ASD5; CMH11; LVNC4;

Gene ID

[70](#)

mRNA Refseq

[NM_005159](#)

Protein Refseq

[NP_005150](#)

MIM


[102540](#)

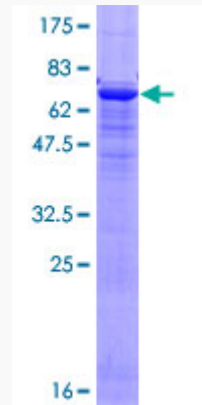
UniProt ID

[P68032](#)

 Tel: 1-631-559-9269 1-516-512-3133

 Email: info@creative-biomart.com  Fax: 1-631-938-8127

 45-1 Ramsey Road, Shirley, NY 11967, USA



12.5% SDS-PAGE Stained with Coomassie Blue.

 Tel: 1-631-559-9269 1-516-512-3133

 Email: info@creative-biomart.com  Fax: 1-631-938-8127

 45-1 Ramsey Road, Shirley, NY 11967, USA