

Recombinant Human ACTC1 protein, His-tagged

Cat. No. ACTC1-4785H Lot. No. (See product label)

SPECIFICATION

Product Overview	Recombinant Human ACTC1 protein(P68032)(3-377aa), fused with C-terminal His tag, was expressed in Insect cells.
Species	Human
Source	Insect cells
ProteinLength	3-377aa
Form	If the delivery form is liquid, the default storage buffer is Tris/PBS-based buffer, 5%-50% glycerol. If the delivery form is lyophilized powder, the buffer before lyophilization is Tris/PBS-based buffer, 6% Trehalose, pH 8.0.
Molecular Mass	47.4 kDa
Purity	Greater than 90% as determined by SDS-PAGE.
Storage	Store at -20°C/-80°C upon receipt, aliquoting is necessary for mutiple use. Avoid repeated freeze-thaw cycles.
Reconstitution	We recommend that this vial be briefly centrifuged prior to opening to bring the contents to the bottom. Please reconstitute protein in deionized sterile water to a concentration of 0.1-1.0 mg/mL. We recommend to add 5-50% of glycerol (final concentration) and aliquot for long-term storage at -20°C/-80°C.

 Tel: 1-631-559-9269 1-516-512-3133

 Email: info@creative-biomart.com  Fax: 1-631-938-8127

 45-1 Ramsey Road, Shirley, NY 11967, USA

AA Sequence

DDEETTALVCDNGSGLVKAGFAGDDAPRAVFPSSIVGRPRHQGVMVGMGQKDSYV
 GDEAQSQRGILTLKYPIEHGIITNWDDMEKIWHHTFYNELRVAPEEHPTLLTEAPLNP
 KANREKMTQIMFETFNVPAMYVAIQAVLSLYASGRRTTGIVLDSGDGVTHNVPIYEGY
 ALPHAIMRLDLAGRDLTDYLMKILTERGYSFVTTAEREIVRDIKEKLCYVALDFENEMA
 TAASSSSLEKSYELPDGQVITIGNERFRCPETLFQPSFIGMESAGIHETTYNSIMKCDI
 DIRKDLYANNVLSGGTTMYPGIADRMQKEITALAPSTMKIKIIPPERKYSVWIGGSIL
 ASLSTFQQMWISKQEYDEAGPSIVHRKCF

GENE INFORMATION

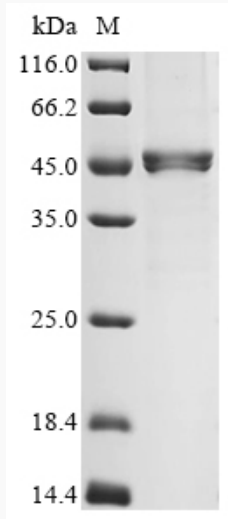
Gene Name	ACTC1 actin, alpha, cardiac muscle 1 [Homo sapiens]
Official Symbol	ACTC1
Synonyms	ACTC1; actin, alpha, cardiac muscle 1; ACTC, actin, alpha, cardiac muscle; actin, alpha cardiac muscle 1; CMD1R; alpha-cardiac actin; ACTC; ASD5; CMH11; LVNC4;
Gene ID	70
mRNA Refseq	NM_005159
Protein Refseq	NP_005150
MIM	102540
UniProt ID	P68032

 Tel: 1-631-559-9269 1-516-512-3133

 Email: info@creative-biomart.com  Fax: 1-631-938-8127

 45-1 Ramsey Road, Shirley, NY 11967, USA

SDS-PAGE



 Tel: 1-631-559-9269 1-516-512-3133

 Email: info@creative-biomart.com  Fax: 1-631-938-8127

 45-1 Ramsey Road, Shirley, NY 11967, USA