

Native Bovine ACTC1 Protein

Cat. No. ACTC1-852B Lot. No. (See product label)

SPECIFICATION

Product Overview	Native Bovine ACTC1 was purified from Bovine cardiac muscle.
Species	Bovine
Source	Bovine cardiac muscle
ProteinLength	374 amino acids
Form	2mM Tris-Cl pH 8.2, 0.4mM ATP, 0.5mM DTT, 0.1mM CaCl ₂ , 1mM NaN ₃ and 0.3% disaccharides, when reconstituted with 1.0 ml ultrapure water to obtain a 1mg/ml solution.
Molecular Mass	42kDa
Purity	>99% by scanning densitometry
Storage	Actin stored at -70 centigrade upon arrival will be stable in performance for at least 6 months from the date of purchase. Solubilized G-actin is kept on ice and should be used within 1 week. Avoid refreezing.
Shipping	At ambient temperature. Upon delivery store at -70 centigrade.

GENE INFORMATION

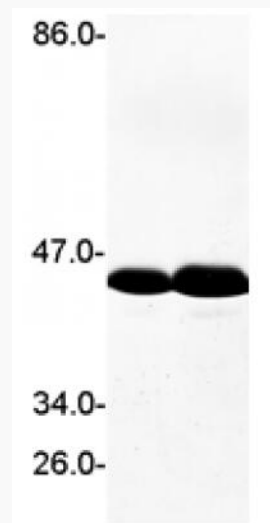
Gene Name	ACTC1 actin, alpha, cardiac muscle 1 [Bos taurus]
------------------	---

 Tel: 1-631-559-9269 1-516-512-3133

 Email: info@creative-biomart.com  Fax: 1-631-938-8127

 45-1 Ramsey Road, Shirley, NY 11967, USA

Official Symbol	ACTC1
Synonyms	ACTC1; actin, alpha, cardiac muscle 1
Gene ID	533219
mRNA Refseq	NM_001034585
Protein Refseq	NP_001029757
UniProt ID	Q3ZC07



 Tel: 1-631-559-9269 1-516-512-3133

 Email: info@creative-biomart.com  Fax: 1-631-938-8127

 45-1 Ramsey Road, Shirley, NY 11967, USA