

Recombinant Human ACTG1 Protein, MYC/DDK-tagged, C13 and N15-labeled

Cat. No. ACTG1-025H **Lot. No.** (See product label)

SPECIFICATION

Product Overview	ACTG1 MS Standard C13 and N15-labeled recombinant protein (NP_001605) with a C-terminal MYC/DDK tag, was expressed in HEK293 cells.
Species	Human
Source	HEK293
Description	Actins are highly conserved proteins that are involved in various types of cell motility and in maintenance of the cytoskeleton. Three main groups of actin isoforms have been identified in vertebrate animals: alpha, beta, and gamma. The alpha actins are found in muscle tissues and are a major constituent of the contractile apparatus. The beta and gamma actins co-exist in most cell types as components of the cytoskeleton and as mediators of internal cell motility. Actin gamma 1, encoded by this gene, is a cytoplasmic actin found in all cell types. Mutations in this gene are associated with DFNA20/26, a subtype of autosomal dominant non-syndromic sensorineural progressive hearing loss and also with Baraitser-Winter syndrome. Alternative splicing results in multiple transcript variants.
Molecular Mass	41.8 kDa
AA Sequence	MEEEIAALVIDNGSGMCKAGFAGDDAPRAVFPSIVGRPRHQGVMVGMGQKDSYVG DEAQSKRGILTLKYPIEHGIVTNWDDMEKIWHHTFYNELRVAPEEHPVLLTEAPLNPK ANREKMTQIMFETFNTPAMYVAIQAVLSLYASGRTTGIVMDSGDGVTHTVPIYEGYA

 Tel: 1-631-559-9269 1-516-512-3133

 Email: info@creative-biomart.com  Fax: 1-631-938-8127

 45-1 Ramsey Road, Shirley, NY 11967, USA



LPHAILRLDLAGRDLTDYLMKILTERGYSFTTTAEREIVRDIKEKLCYVALDFEQEMAT
AASSSSLEKSYELPDGQVITIGNERFRCPEALFQPSFLGMESCGIHETTTFNSIMKCDV
DIRKDLYANTVLSGGTTMYPGIADRMQKEITALAPSTMKIKIIPPERKYSVWIGGSILA
SLSTFQQMWISKQEYDESGPSIVHRKCFTRTRPLEQKLISEEDLAANDILDYKDDDD
KV

Purity > 80% as determined by SDS-PAGE and Coomassie blue staining

Stability Stable for 3 months from receipt of products under proper storage and handling conditions.

Storage Store at -80 centigrade. Avoid repeated freeze-thaw cycles.

Concentration 50 µg/mL as determined by BCA

Storage Buffer 100 mM glycine, 25 mM Tris-HCl, pH 7.3.

GENE INFORMATION

Gene Name ACTG1 actin gamma 1 [Homo sapiens (human)]

Official Symbol ACTG1

Synonyms ACTG1; actin gamma 1; ACT; ACTG; DFNA20; DFNA26; HEL-176; actin, cytoplasmic 2; cytoskeletal gamma-actin; epididymis luminal protein 176

Gene ID 71

mRNA Refseq NM_001614

Protein Refseq NP_001605

Tel: 1-631-559-9269 1-516-512-3133

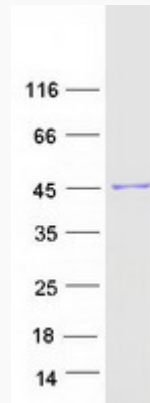
Email: info@creative-biomart.com Fax: 1-631-938-8127

45-1 Ramsey Road, Shirley, NY 11967, USA

MIM 102560

UniProt ID P63261

SDS-PAGE



 Tel: 1-631-559-9269 1-516-512-3133

 Email: info@creative-biomart.com  Fax: 1-631-938-8127

 45-1 Ramsey Road, Shirley, NY 11967, USA