

Recombinant Full Length Human ACTG1 Protein, C-Flag-tagged

Cat. No. ACTG1-759HFL **Lot. No.** (See product label)

SPECIFICATION

Product Overview	Recombinant Full Length Human ACTG1 Protein, fused to Flag-tag at C-terminus, was expressed in Mammalian cells.
Species	Human
Source	Mammalian Cells
Description	Actins are highly conserved proteins that are involved in various types of cell motility and in maintenance of the cytoskeleton. Three main groups of actin isoforms have been identified in vertebrate animals: alpha, beta, and gamma. The alpha actins are found in muscle tissues and are a major constituent of the contractile apparatus. The beta and gamma actins co-exist in most cell types as components of the cytoskeleton and as mediators of internal cell motility. Actin gamma 1, encoded by this gene, is a cytoplasmic actin found in all cell types. Mutations in this gene are associated with DFNA20/26, a subtype of autosomal dominant non-syndromic sensorineural progressive hearing loss and also with Baraitser-Winter syndrome. Alternative splicing results in multiple transcript variants.
Form	25 mM Tris HCl, pH 7.3, 100 mM glycine, 10% glycerol.
Molecular Mass	41.6 kDa
AA Sequence	MEEEIAALVIDNGSGMCKAGFAGDDAPRAVFPSIVGRPRHQGVMVGMGQKDSYVG DEAQSKRGILTLYKYP IEHGIVTNWDDMEKIWHHTFYNELRVAPEEHPVLLTEAPLNP

 Tel: 1-631-559-9269 1-516-512-3133

 Email: info@creative-biomart.com  Fax: 1-631-938-8127

 45-1 Ramsey Road, Shirley, NY 11967, USA

KANREKMTQIMFETFNTPAMYVAIQAVL SLYASGRRTTGIVMDSGDGVTHTVPIYEGY
 ALPHAILRLDLAGRDLTDYLMKILTERGYSFTTTAEREIVR DIKEKLCYVALDFEQEMA
 TAASSSSLEKSYELPDGQVITIGNERFRCPEALFQPSFLGMESCGIHETTFN SIMKC
 DVDIRKDLYANTVLSGGTTMYPGIADRMQKEITALAPSTMKIKIIPPERKYSVWIGGS
 ILASLS
 TFQQMWISKQEYDESGPSIVHRKCFTRTRPLEQKLISEEDLAANDILDYKDDDDKV

Purity	> 80% as determined by SDS-PAGE and Coomassie blue staining.
Stability	Stable for 12 months from the date of receipt of the product under proper storage and handling conditions. Avoid repeated freeze-thaw cycles.
Storage	Store at -80 centigrade.
Concentration	>50 ug/mL as determined by microplate BCA method.
Preparation	Recombinant protein was captured through anti-DDK affinity column followed by conventional chromatography steps.
Protein Pathways	Adherens junction, Arrhythmogenic right ventricular cardiomyopathy (ARVC), Dilated cardiomyopathy, Focal adhesion, Hypertrophic cardiomyopathy (HCM), Leukocyte transendothelial migration, Pathogenic Escherichia coli infection, Regulation of actin cytoskeleton, Tight junction, Vibrio cholerae infection, Viral myocarditis
Full Length	Full L.

GENE INFORMATION

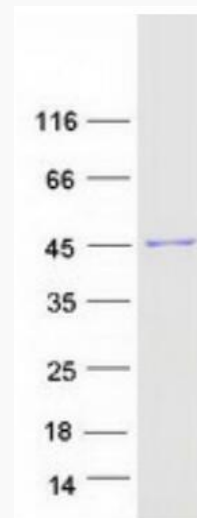
Gene Name	ACTG1 actin gamma 1 [Homo sapiens (human)]
Official Symbol	ACTG1

 Tel: 1-631-559-9269 1-516-512-3133

 Email: info@creative-biomart.com  Fax: 1-631-938-8127

 45-1 Ramsey Road, Shirley, NY 11967, USA

Synonyms	ACT; ACTG; DFNA20; DFNA26; HEL-176
Gene ID	71
mRNA Refseq	NM_001614.5
Protein Refseq	NP_001605.1
MIM	102560
UniProt ID	P63261



Coomassie blue staining of purified ACTG1 protein.

 Tel: 1-631-559-9269 1-516-512-3133

 Email: info@creative-biomart.com  Fax: 1-631-938-8127

 45-1 Ramsey Road, Shirley, NY 11967, USA