

Recombinant Human ACTG2 Protein, GST-tagged

Cat. No. ACTG2-217H Lot. No. (See product label)

SPECIFICATION

| | |
|-------------------------|--|
| Product Overview | Human ACTG2 full-length ORF (AAH12617, 1 a.a. - 376 a.a.) recombinant protein with GST-tag at N-terminal. |
| Species | Human |
| Source | Wheat Germ |
| Description | Actins are highly conserved proteins that are involved in various types of cell motility and in the maintenance of the cytoskeleton. Three types of actins, alpha, beta and gamma, have been identified in vertebrates. Alpha actins are found in muscle tissues and are a major constituent of the contractile apparatus. The beta and gamma actins co-exist in most cell types as components of the cytoskeleton and as mediators of internal cell motility. This gene encodes actin gamma 2; a smooth muscle actin found in enteric tissues. Alternative splicing results in multiple transcript variants encoding distinct isoforms. Based on similarity to peptide cleavage of related actins, the mature protein of this gene is formed by removal of two N-terminal peptides.[provided by RefSeq, Dec 2010] |
| Molecular Mass | 66.88 kDa |
| AA Sequence | MCEEETTALVCDNGSGLCKAGFAGDDAPRAVFPSIVGRPRHQGMVGMGQKDSY VGDEAQSKRGILTLKYPIEHGIITNWDDMEKIWHHSFYNELRVAPEEHPTLLTEAPLN PKANREKMTQIMFETFNVPAMYVAIQAVLSLYASGRTTGIVLDSGDGVTHNVPIYEG YALPHAIMRLDLAGRDLTDYLMKILTERGYSFVTTAEREIVRDIKEKLCYVALDFENEM |

 Tel: 1-631-559-9269 1-516-512-3133

 Email: info@creative-biomart.com  Fax: 1-631-938-8127

 45-1 Ramsey Road, Shirley, NY 11967, USA



ATAASSSSLEKSYELPDGQVITIGNERFRCPETLFQPSFIGMESAGIHETTYNSIMKC
 DIDIRKDLYANNVLSGGTTMYPGIADRMQKEITALAPSTMKIKIIPPERKYSVWIGGSI
 LASLSTFQQMWISKPEYDEAGPSIVHRKCF

| | |
|-----------------------|---|
| Applications | Enzyme-linked Immunoabsorbent Assay Western Blot (Recombinant protein) Antibody Production Protein Array |
| Notes | Best use within three months from the date of receipt of this protein. |
| Storage | Store at -80 centigrade. Aliquot to avoid repeated freezing and thawing. |
| Storage Buffer | 50 mM Tris-HCl, 10 mM reduced Glutathione, pH=8.0 in the elution buffer. |

GENE INFORMATION

| | |
|------------------------|---|
| Gene Name | ACTG2 actin, gamma 2, smooth muscle, enteric [Homo sapiens] |
| Official Symbol | ACTG2 |
| Synonyms | ACTG2; actin, gamma 2, smooth muscle, enteric; ACTA3, ACTL3; actin, gamma-enteric smooth muscle; ACTSG; alpha-actin 3; alpha-actin-3; gamma-2-actin; actin-like protein; smooth muscle gamma actin; smooth muscle gamma-actin; ACT; ACTE; ACTA3; ACTL3; |
| Gene ID | 72 |
| mRNA Refseq | NM_001199893 |
| Protein Refseq | NP_001186822 |

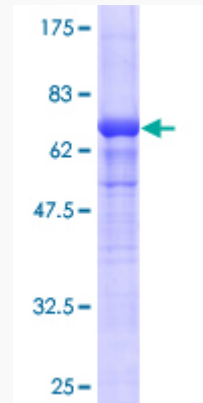
Tel: 1-631-559-9269 1-516-512-3133

Email: info@creative-biomart.com Fax: 1-631-938-8127

45-1 Ramsey Road, Shirley, NY 11967, USA

MIM 102545

UniProt ID P63267



12.5% SDS-PAGE Stained with Coomassie Blue.

Tel: 1-631-559-9269 1-516-512-3133

Email: info@creative-biomart.com Fax: 1-631-938-8127

45-1 Ramsey Road, Shirley, NY 11967, USA