

Recombinant Human ACTL6A Protein, GST-tagged

Cat. No. ACTL6A-220H Lot. No. (See product label)

SPECIFICATION

Product Overview	Human ACTL6A full-length ORF (AAH00949, 1 a.a. - 387 a.a.) recombinant protein with GST-tag at N-terminal.
Species	Human
Source	Wheat Germ
Description	<p>This gene encodes a family member of actin-related proteins (ARPs), which share significant amino acid sequence identity to conventional actins. Both actins and ARPs have an actin fold, which is an ATP-binding cleft, as a common feature. The ARPs are involved in diverse cellular processes, including vesicular transport, spindle orientation, nuclear migration and chromatin remodeling. This gene encodes a 53 kDa subunit protein of the BAF (BRG1/brm-associated factor) complex in mammals, which is functionally related to SWI/SNF complex in <i>S. cerevisiae</i> and <i>Drosophila</i>; the latter is thought to facilitate transcriptional activation of specific genes by antagonizing chromatin-mediated transcriptional repression. Together with beta-actin, it is required for maximal ATPase activity of BRG1, and for the association of the BAF complex with chromatin/matrix. Three transcript variants that encode two different protein isoforms have been described. [provided by RefSeq, Jul 2008]</p>
Molecular Mass	68.31 kDa
AA Sequence	MVVERDDGSTLMEIDGDKGKQGGPTYIDTNALRVPRENMEAISPLKNGMVEDWDSFQAILDHTYKMHVKSEASLHPVLMSEAPWNTRAKREKLTLMFEHYNIPAFFLCKT

 Tel: 1-631-559-9269 1-516-512-3133

 Email: info@creative-biomart.com  Fax: 1-631-938-8127

 45-1 Ramsey Road, Shirley, NY 11967, USA

AVLTAFANGRSTGLILDGATHHTAIPVHDGYVLQQGIVKSPLAGDFITMQCRELFQE
 MNIELVPPYMIASKEAVREGSPANWKRKEKLPQVTRSWHNYMCNCVIQDFQASVLQ
 VSDSTYDEQVAAQMPTVHYEFPNGYNCDFGAERLKIPEGLFDPSNVKGLSGNTMLG
 VSHVTTSSVGMCDIDIRPGLYGSVIVAGGNTLIQSFTDRLNRELSQKTPPSMRLKIA
 NNTTVERRFSSWIGGSILASLGTFFQQMWISKQEYEEGGKQCVERKCP

Applications
 Enzyme-linked Immunoabsorbent Assay
 Western Blot (Recombinant protein)
 Antibody Production
 Protein Array

Notes Best use within three months from the date of receipt of this protein.

Storage Store at -80 centigrade. Aliquot to avoid repeated freezing and thawing.

Storage Buffer 50 mM Tris-HCl, 10 mM reduced Glutathione, pH=8.0 in the elution buffer.

GENE INFORMATION

Gene Name [ACTL6A actin-like 6A \[Homo sapiens \]](#)

Official Symbol [ACTL6A](#)

Synonyms ACTL6A; actin-like 6A; actin-like protein 6A; actin related protein 4; Actl6; Arp4; BAF complex 53 kDa subunit; BAF53A; Baf53a; BRG1 associated factor; INO80 complex subunit K; INO80K; BAF53; arpNbeta; hArpN beta; actin-related protein 4; BRG1-associated factor 53A; actin-related protein Baf53a; 53 kDa BRG1-associated factor A; ACTL6; ARPN-BETA;

Gene ID [86](#)

 Tel: 1-631-559-9269 1-516-512-3133

 Email: info@creative-biomart.com  Fax: 1-631-938-8127

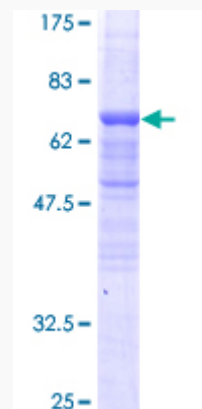
 45-1 Ramsey Road, Shirley, NY 11967, USA

mRNA Refseq [NM_004301](#)

Protein Refseq [NP_004292](#)

MIM [604958](#)

UniProt ID [O96019](#)



12.5% SDS-PAGE Stained with Coomassie Blue.

 Tel: 1-631-559-9269 1-516-512-3133

 Email: info@creative-biomart.com  Fax: 1-631-938-8127

 45-1 Ramsey Road, Shirley, NY 11967, USA