

Recombinant Human ACTL6A Protein, GST-tagged

Cat. No. ACTL6A-221H Lot. No. (See product label)

SPECIFICATION

Product Overview	Human ACTL6A full-length ORF (NP_004292.1, 1 a.a. - 429 a.a.) recombinant protein with GST-tag at N-terminal.
Species	Human
Source	Wheat Germ
Description	<p>This gene encodes a family member of actin-related proteins (ARPs), which share significant amino acid sequence identity to conventional actins. Both actins and ARPs have an actin fold, which is an ATP-binding cleft, as a common feature. The ARPs are involved in diverse cellular processes, including vesicular transport, spindle orientation, nuclear migration and chromatin remodeling. This gene encodes a 53 kDa subunit protein of the BAF (BRG1/brm-associated factor) complex in mammals, which is functionally related to SWI/SNF complex in <i>S. cerevisiae</i> and <i>Drosophila</i>; the latter is thought to facilitate transcriptional activation of specific genes by antagonizing chromatin-mediated transcriptional repression. Together with beta-actin, it is required for maximal ATPase activity of BRG1, and for the association of the BAF complex with chromatin/matrix. Three transcript variants that encode two different protein isoforms have been described. [provided by RefSeq, Jul 2008]</p>
Molecular Mass	73.9 kDa
AA Sequence	MSGGVYGGDEVGALVFDIGSYTVRAGYAGEDCPKVDFPTAIGMVVERDDGSTLMEI DGDKKGKQGGPTYIIDTNALRVPRENMEAISPLKNGMVEDWDSFQAILDHTYKMHVK

 Tel: 1-631-559-9269 1-516-512-3133

 Email: info@creative-biomart.com  Fax: 1-631-938-8127

 45-1 Ramsey Road, Shirley, NY 11967, USA

SEASLHPVLMSEAPWNTRAKREKLTTELMFEHYNIPAFFLCKTAVLTA FANGRSTGLIL
 DSGATHHTTAIPVHDGYVLQQGIVKSPLAGDFITMQCRELFQEMNIELVPPYMIASKEA
 VREGSPANWKRKEKLPQVTRSWHNYMCNCVIQDFQASVLQVSDSTYDEQVAAQM
 PTVHYEFPNGYNCDFGAERLKIPEGLFDPSNVKGLSGNTMLGVSHVVTTSSVGMCDI
 DIRPGLYGSVIVAGGNTLIQSFTDRLNRELSQKTPPSMRLKLIANNTTVERRFSSWIG
 GSILASLGTFFQQMWISKQEYEEGGKQCVERKCP

Applications	Enzyme-linked Immunoabsorbent Assay Western Blot (Recombinant protein) Antibody Production Protein Array
Notes	Best use within three months from the date of receipt of this protein.
Storage	Store at -80 centigrade. Aliquot to avoid repeated freezing and thawing.
Storage Buffer	50 mM Tris-HCl, 10 mM reduced Glutathione, pH=8.0 in the elution buffer.

GENE INFORMATION

Gene Name	ACTL6A actin-like 6A [Homo sapiens]
Official Symbol	ACTL6A
Synonyms	ACTL6A; actin-like 6A; actin-like protein 6A; actin related protein 4; Actl6; Arp4; BAF complex 53 kDa subunit; BAF53A; Baf53a; BRG1 associated factor; INO80 complex subunit K; INO80K; BAF53; arpNbeta; hArpN beta; actin-related protein 4; BRG1-associated factor 53A; actin-related protein Baf53a; 53 kDa BRG1-associated factor A; ACTL6; ARPN-BETA;
Gene ID	86

 Tel: 1-631-559-9269 1-516-512-3133

 Email: info@creative-biomart.com  Fax: 1-631-938-8127

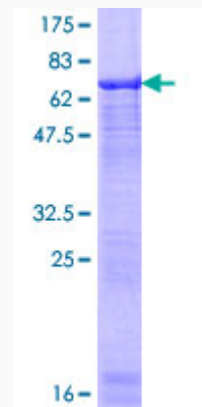
 45-1 Ramsey Road, Shirley, NY 11967, USA

mRNA Refseq NM_004301

Protein Refseq NP_004292

MIM 604958

UniProt ID O96019



12.5% SDS-PAGE Stained with Coomassie Blue.

Tel: 1-631-559-9269 1-516-512-3133

Email: info@creative-biomart.com Fax: 1-631-938-8127

45-1 Ramsey Road, Shirley, NY 11967, USA