

Recombinant Human ACTL7A Protein (1-435 aa), His-SUMO-tagged

Cat. No. ACTL7A-1169H **Lot. No.** (See product label)

SPECIFICATION

Product Overview	Recombinant Human ACTL7A Protein (1-435 aa) is produced by E. coli expression system. This protein is fused with a 6xHis-SUMO tag at the N-terminal. Research Area: Signal Transduction. Protein Description: Full Length.
Species	Human
Source	E.coli
ProteinLength	1-435 aa
Form	Tris-based buffer,50% glycerol
Molecular Mass	64.6 kDa
AA Sequence	MWAPPAAIMGDGPTKKVGNQAPLQTQALQTASLRDGPAAKRAVWVRHTSSEPQEPT ESKAAKERPKQEVTKAVVVLDLGTGYCKCGFAGLPRPTHKISTTVGKPYMETAKTGD NRKETFVGQELNNTNVHLKLVNPLRHGIIVDWDTVQDIWEYLFRQEMKIAPEEHA VLSDPPLSPHTNREKYAEMLFEAFNTPAMHAIYQSRLSMYSYGRTSGLVVEVGHGVS YVVIPIYEGYPLPSITGRLDYAGSDLTAYLLGLLNSAGNEFTQDQMGIVEDIKKKCCFV ALDPIEEKKVPLSEHTIRYVLPDGKEIQLCQERFLCSEMFFKPSLIKSMQLGLHTQTVS CLNKCDIALKRDLMGNILLCGGSTMLSGFPNRLQKELSSMCPNDTPQVNVLPERDS AVWTGGSILASLQGFQPLWVHRFEYEEHGPFFLYRRCF
Purity	> 90% as determined by SDS-PAGE.

 Tel: 1-631-559-9269 1-516-512-3133

 Email: info@creative-biomart.com  Fax: 1-631-938-8127

 45-1 Ramsey Road, Shirley, NY 11967, USA

Notes	Repeated freezing and thawing is not recommended. Store working aliquots at 4 centigrade for up to one week.
Storage	The shelf life is related to many factors, storage state, buffer ingredients, storage temperature and the stability of the protein itself. Generally, the shelf life of liquid form is 6 months at -20 centigrade/-80 centigrade. The shelf life of lyophilized form is 12 months at -20 centigrade/-80 centigrade.
Concentration	A hardcopy of COA with reconstitution instruction is sent along with the products. Please refer to it for detailed information.

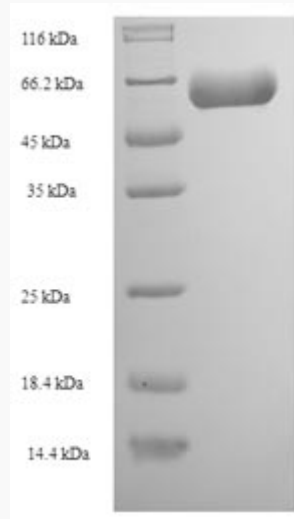
GENE INFORMATION

Gene Name	ACTL7A actin-like 7A [Homo sapiens]
Official Symbol	ACTL7A
Synonyms	ACTL7A; actin-like 7A; actin-like protein 7A;
Gene ID	10881
mRNA Refseq	NM_006687
Protein Refseq	NP_006678
MIM	604303
UniProt ID	Q9Y615

 Tel: 1-631-559-9269 1-516-512-3133

 Email: info@creative-biomart.com  Fax: 1-631-938-8127

 45-1 Ramsey Road, Shirley, NY 11967, USA



(Tris-Glycine gel) Discontinuous SDS-PAGE (reduced) with 5% enrichment gel and 15% separation gel.

 Tel: 1-631-559-9269 1-516-512-3133

 Email: info@creative-biomart.com  Fax: 1-631-938-8127

 45-1 Ramsey Road, Shirley, NY 11967, USA