

Recombinant Human ACTN1 Protein, GST-tagged

Cat. No. ACTN1-228H **Lot. No.** (See product label)

SPECIFICATION

Product Overview	Human ACTN1 full-length ORF (NP_001093.1, 1 a.a. - 892 a.a.) recombinant protein with GST-tag at N-terminal.
Species	Human
Source	Wheat Germ
Description	<p>Alpha actinins belong to the spectrin gene superfamily which represents a diverse group of cytoskeletal proteins, including the alpha and beta spectrins and dystrophins. Alpha actinin is an actin-binding protein with multiple roles in different cell types. In nonmuscle cells, the cytoskeletal isoform is found along microfilament bundles and adherens-type junctions, where it is involved in binding actin to the membrane. In contrast, skeletal, cardiac, and smooth muscle isoforms are localized to the Z-disc and analogous dense bodies, where they help anchor the myofibrillar actin filaments. This gene encodes a nonmuscle, cytoskeletal, alpha actinin isoform and maps to the same site as the structurally similar erythroid beta spectrin gene. Three transcript variants encoding different isoforms have been found for this gene. [provided by RefSeq, Jul 2008]</p>
Molecular Mass	129.5 kDa
AA Sequence	<p>MDHYDSQQTNDYMQPEEDWDRLLLLPAWEKQQRKTFTAWCNSHLRKAGTQIENI EEDFRDGLKLMMLLEVISGERLAKPERGKMRVHKISNVNKALDFIASKGVKLVSIGAE EIVDGNVKMTLGMIIWTIILRFAIQDISVEETSAKEGLLLWCQRKTAPYKNVNIQNFHIS</p>

 Tel: 1-631-559-9269 1-516-512-3133

 Email: info@creative-biomart.com  Fax: 1-631-938-8127

 45-1 Ramsey Road, Shirley, NY 11967, USA

WKDGLGFCALIHRRPELIDYGKLRKDDPLTNLNTAFDVAEKYLDIPKMLDAEDIVGT
 ARPDEKAIMTYVSSFYHAFSGAQAETAANRICKVLAVNQENEQLMEDYEKLASDLL
 EWIRRTIPWLENRVPEMTHAMQQKLEDFRDYRRLHKPPKVQEKCLEINFNTLQT
 KLRLSNRPAFMPSEGRMVSDINNAWGCLEQVEKGYEELLNEIRRLERLDHLAEKF
 RQKASIHEAWTDGKEAMLRQKDYETATLSEIKALLKKHEAFESDLAAHQDRVEQIAAI
 AQELNELDYDPSVSNARCQKICDQWDNLGALTQKRREALERTEKLETTIDQLYLEY
 AKRAAPFNNWMEGAMEDLQDTFIVHTIEEIQGLTTAHEQFKATLPDADKERLAILGIH
 NEVSKIVQTYHVN MAGTNPYTTITPQEINGKWDHVRQLVPRRDQALTEEHARQQHN
 ERLRKQFGAQANVIGPWIQTKMEEIGRISIEMHGTLEDQLSHLRQYEKSIVNYKPKID
 QLEGDHQLIQEALIFDNKHTNYTMEHIRVGWEQLLTTIARTINEVENQILTRDAKGISQ
 EQMNEFRASFNHFDRDHSGTLGPEEFKACLISLGYDIGNDPQGEAEFARIMSIVDPN
 RLGVVTFQAFIDFMSRETADTDTADQVMASFKILAGDKNYITMDELRRLEPPDQAEY
 CIARMAPYTGPDSPVPGALDYMSFSTALYGESDL

Applications	Enzyme-linked Immunoabsorbent Assay Western Blot (Recombinant protein) Antibody Production Protein Array
---------------------	---

Notes	Best use within three months from the date of receipt of this protein.
--------------	--

Storage	Store at -80 centigrade. Aliquot to avoid repeated freezing and thawing.
----------------	--

Storage Buffer	50 mM Tris-HCl, 10 mM reduced Glutathione, pH=8.0 in the elution buffer.
-----------------------	--

GENE INFORMATION

Gene Name	ACTN1 actinin, alpha 1 [Homo sapiens]
------------------	---

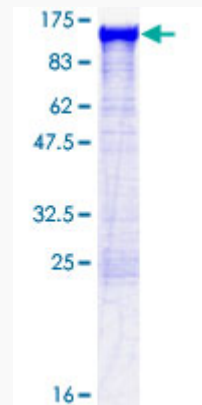
Official Symbol	ACTN1
------------------------	-------

 Tel: 1-631-559-9269 1-516-512-3133

 Email: info@creative-biomart.com  Fax: 1-631-938-8127

 45-1 Ramsey Road, Shirley, NY 11967, USA

Synonyms	ACTN1; actinin, alpha 1; alpha-actinin-1; actinin 1 smooth muscle; non-muscle alpha-actinin-1; F-actin cross-linking protein; alpha-actinin cytoskeletal isoform; FLJ40884; FLJ54432;
Gene ID	87
mRNA Refseq	NM_001102
Protein Refseq	NP_001093
MIM	102575
UniProt ID	P12814



12.5% SDS-PAGE Stained with Coomassie Blue.

 Tel: 1-631-559-9269 1-516-512-3133

 Email: info@creative-biomart.com  Fax: 1-631-938-8127

 45-1 Ramsey Road, Shirley, NY 11967, USA