

Recombinant Human ACTN2 protein, GST-tagged

Cat. No. ACTN2-1622H Lot. No. (See product label)

SPECIFICATION

Product Overview	Recombinant Human ACTN2 protein(1-301 aa), fused with N-terminal GST tag, was expressed in E. coli.
Species	Human
Source	E.coli
ProteinLength	1-301 aa
Tag	N-GST
Form	The purified protein was Lyophilized from sterile PBS (58mM Na ₂ HPO ₄ , 17mM NaH ₂ PO ₄ , 68mM NaCl, pH7.4). 5 % trehalose and 5 % mannitol are added as protectant before lyophilization.
Purity	85%, by SDS-PAGE with Coomassie Brilliant Blue staining.
Storage	Short-term storage: Store at 2-8°C for (1-2 weeks). Long-term storage: Aliquot and store at -20°C to -80°C for up to 3 months, reconstitution with sterile water and addition of an equal volume of glycerol. Avoid repeat freeze-thaw cycles.
Reconstitution	Reconstitute at 0.25 µg/µl in 200 µl sterile water for short-term storage. After reconstitution with sterile water, if glycerol has no effect on subsequent experiments, it is recommended to add an equal volume of glycerol for long-term storage.

 Tel: 1-631-559-9269 1-516-512-3133

 Email: info@creative-biomart.com  Fax: 1-631-938-8127

 45-1 Ramsey Road, Shirley, NY 11967, USA



AA Sequence

MNQIEPGVQYNYVYDEDEYMIQEEEWDRDLLLDPAWEKQQRKTFTAWCNSHLRKA
GTQIENIEEDFRNGLKMLLLEVISGERLPKPD RGKMRFHKIANV NKALDYIASKGVKL
VSIGAE EIVDGNVKMTLGM IWTIILRFAIQDISVEETS AKEGLLLWCQRKTAPYRNVNI
QNFHTSWKDGLGLCALIHRHRPDLIDYSKLNKDDPIGNINLAMEIAEKHLDIPKMLDA
EDIVNTPKPD ERAIMTYVSCFYHAFAGAEQAETAANRICKVLAVNQENERLMEEYER
LASELLEWIRRTI

GENE INFORMATION

Gene Name ACTN2 actinin, alpha 2 [Homo sapiens]

Official Symbol ACTN2

Synonyms ACTN2; actinin, alpha 2; alpha-actinin-2; F-actin cross-linking protein; alpha-actinin skeletal muscle; CMD1AA;

Gene ID 88

mRNA Refseq NM_001103

Protein Refseq NP_001094

MIM 102573

UniProt ID P35609

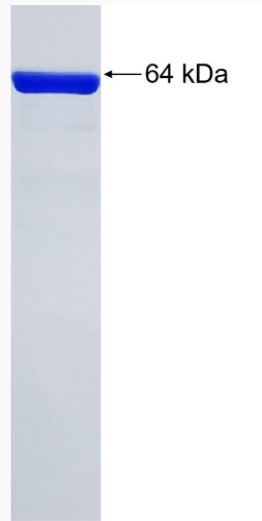
Tel: 1-631-559-9269 1-516-512-3133

Email: info@creative-biomart.com Fax: 1-631-938-8127

45-1 Ramsey Road, Shirley, NY 11967, USA



SDS-PAGE



Tel: 1-631-559-9269 1-516-512-3133

Email: info@creative-biomart.com Fax: 1-631-938-8127

45-1 Ramsey Road, Shirley, NY 11967, USA