

Recombinant Human ACTN2 Protein, Myc/DDK-tagged, C13 and N15-labeled

Cat. No. ACTN2-5633H **Lot. No.** (See product label)

SPECIFICATION

| | |
|-------------------------|---|
| Product Overview | ACTN2 MS Standard C13 and N15-labeled recombinant protein (NP_001094) with a C-terminal MYC/DDK tag, was expressed in HEK293 cells. |
| Species | Human |
| Source | HEK293 |
| Description | <p>Alpha actinins belong to the spectrin gene superfamily which represents a diverse group of cytoskeletal proteins, including the alpha and beta spectrins and dystrophins. Alpha actinin is an actin-binding protein with multiple roles in different cell types. In nonmuscle cells, the cytoskeletal isoform is found along microfilament bundles and adherens-type junctions, where it is involved in binding actin to the membrane. In contrast, skeletal, cardiac, and smooth muscle isoforms are localized to the Z-disc and analogous dense bodies, where they help anchor the myofibrillar actin filaments. This gene encodes a muscle-specific, alpha actinin isoform that is expressed in both skeletal and cardiac muscles. Several transcript variants encoding different isoforms have been found for this gene.</p> |
| Molecular Mass | 103.7 kDa |
| AA Sequence | <p>MNQIEPGVQYNYVYDEDEYMIQEEEWDRLLLLPAWEKQQRKTFTAWCNSHLRKA GTQIENIEEDFRNGLKMLLLEVISGERLPKPD RGKMRFHKIANV NKALDYIASKGVKL V SIGAEEIVDGNVKMTLGM IWTIILRFAIQDISVEETSAKEGLLLWCQRKTAPYRNVNI</p> |

 Tel: 1-631-559-9269 1-516-512-3133

 Email: info@creative-biomart.com  Fax: 1-631-938-8127

 45-1 Ramsey Road, Shirley, NY 11967, USA

QNFHTSWKDGGLGICALIHRHRPDLIDYSKLNKDDPIGNINLAMEIAEKHLDIPKMLDA
 EDIVNTPKPKDERAIMTYVSCFYHAFAGAEQAETAANRICKVLAVNQENERLMEEYER
 LASELLEWIRRTIPWLENRTPEKTMQAMQKKLEDFRDYRRKHKPPKVQEKQCLEINF
 NTLQTKLRISNRPAFMPSEGKMVSDIAGAWQRLEQAEGYEEWLLNEIRRLERLEHL
 AEKFRQKASTHETWAYGKEQILLQKDYESASLTEVRALLRKHEAFESDLAAHQDRV
 EQIAAIAQELNELDYHDAVNVNDRQCQKICDQWDRGLGTLTQKRREALERMEKLETID
 QLHLEFAKRAAPFNNWMEGAMEDLQDMFIVHSIEEIQSLITAHEQFKATLPEADGER
 QSIMAIQNEVEKVIQSYNIRISSSNPYSTVTMDELRTKWDKVKQLVPIRDQSLQEELA
 RQHANERLRRQFAAQANAIGPWIQNKMEEIARSSIQITGALEDQMNQLKQYEHNIINY
 KNNIDKLEGDHQLIQEALVFDNKHTNYTMEHIRVGVWELLTTIARTINEVETQILTRDA
 KGITQEQMNEFRASFNHFDRRKNGLMDHEDFRACLISMGYDLGEAEFARIMTLVDP
 NGQGTVTFQSFIDFMTRETADTDTAEQVIASFRILASDKPYILAEELRRELPPDQAQY
 CIKRMPAYSGPGSVPGALDYAAFSSALYGESDLTRTRPLEQKLISEEDLAANDILDYK
 DDDDKV

Purity > 80% as determined by SDS-PAGE and Coomassie blue staining

Stability Stable for 3 months from receipt of products under proper storage and handling conditions.

Storage Store at -80 centigrade. Avoid repeated freeze-thaw cycles.

Concentration 50 µg/mL as determined by BCA

Storage Buffer 100 mM glycine, 25 mM Tris-HCl, pH 7.3.

GENE INFORMATION

Gene Name ACTN2 actinin alpha 2 [Homo sapiens (human)]

Official Symbol ACTN2

 Tel: 1-631-559-9269 1-516-512-3133

 Email: info@creative-biomart.com  Fax: 1-631-938-8127

 45-1 Ramsey Road, Shirley, NY 11967, USA

Synonyms ACTN2; actinin, alpha 2; alpha-actinin-2; F-actin cross-linking protein; alpha-actinin skeletal muscle; CMD1AA;

Gene ID 88

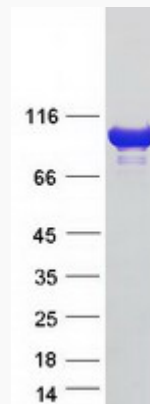
mRNA Refseq NM_001103

Protein Refseq NP_001094

MIM 102573

UniProt ID P35609

SDS-PAGE



 Tel: 1-631-559-9269 1-516-512-3133

 Email: info@creative-biomart.com  Fax: 1-631-938-8127

 45-1 Ramsey Road, Shirley, NY 11967, USA