

Recombinant Full Length Human ACTN2 Protein, C-Flag-tagged

Cat. No. ACTN2-968HFL **Lot. No.** (See product label)

SPECIFICATION

Product Overview	Recombinant Full Length Human ACTN2 Protein, fused to Flag-tag at C-terminus, was expressed in Mammalian cells.
Species	Human
Source	Mammalian Cells
Description	<p>Alpha actinins belong to the spectrin gene superfamily which represents a diverse group of cytoskeletal proteins, including the alpha and beta spectrins and dystrophins. Alpha actinin is an actin-binding protein with multiple roles in different cell types. In nonmuscle cells, the cytoskeletal isoform is found along microfilament bundles and adherens-type junctions, where it is involved in binding actin to the membrane. In contrast, skeletal, cardiac, and smooth muscle isoforms are localized to the Z-disc and analogous dense bodies, where they help anchor the myofibrillar actin filaments. This gene encodes a muscle-specific, alpha actinin isoform that is expressed in both skeletal and cardiac muscles. Several transcript variants encoding different isoforms have been found for this gene.</p>
Form	25 mM Tris HCl, pH 7.3, 100 mM glycine, 10% glycerol.
Molecular Mass	103.7 kDa
AA Sequence	MNQIEPGVQYNYVYDEDEYMIQEEEWDRDLLLDPAWEKQQRKTFTAWCNSHLRKA GTQIENIEEDFRNGL KLMLLLEVISGERLPKPDRGKMRFHKIANVVKALDYIASKGVK

 Tel: 1-631-559-9269 1-516-512-3133

 Email: info@creative-biomart.com  Fax: 1-631-938-8127

 45-1 Ramsey Road, Shirley, NY 11967, USA

LVSIGAEIIVDGNVKMTLGMIIWTLIR FAIQDISVEETSAKEGLLLWCQRKTAPYRNVN
 IQNFHTSWKDGLGLCALIHRHRPDLIDYSKLNKDDPIG NINLAMEIAEKHLDIPKMLDA
 EDIVNTPKPDERAIMTYVSCFYHAFAGAEQAETAANRICKVLAVNQENE RLMEEYER
 LASELLEWIRRTIPWLENRTPEKTMQAMQKKLEDFRDYRRKHKPPKVQEKQCLEINF
 NTLQT KLRISNRPAFMPSEGKMVSDIAGAWQRLEQAEGYEEWLLNEIRRLERLEH
 LAEKFRQKASTHETWAYGK EQILLQKDYESASLTEVRALLRKHEAFESDLAAHQDR
 VEQIAAIAQELNELDYHDAVNVNDRQCQKICDQW DRLGTLTQKRREALERMEKLETI
 DQLHLEFAKRAAPFNNWMEGAMEDLQDMFIVHSIEEIQSLITAEHQ FKATLPEADGE
 RQSIMAIQNEVEKVIQSYNIRISSSNPYSTVTMDELRTKWDKVKQLVPIRDQSLQEEL
 A RQHANERLRRQFAAQANAIGPWIQNKMEEIARSSIQITGALEDQMNQLKQYEHNII
 NYKNNIDKLEGDHQ LIQEALVFDNKHTNYTMEHIRVWELLTTIARTINEVETQILTR
 DAKGITQEQMNEFRASFNHFDRRKN GLMDHEDFRACLISMGYDLGAEAFARIMTLV
 DPNGQGTVTFQSFIDFMTRETADTDTAEQVIASFRILAS
 DKPYILAEELRRELPPDQAQYCIKRMPAYSGPGSVPGALDYAAFSSALYGESDLTRT
 RPLEQKLISEEDLAANDILDYKDDDDKV

Purity > 80% as determined by SDS-PAGE and Coomassie blue staining.

Stability Stable for 12 months from the date of receipt of the product under proper storage and handling conditions. Avoid repeated freeze-thaw cycles.

Storage Store at -80 centigrade.

Concentration >50 ug/mL as determined by microplate BCA method.

Preparation Recombinant protein was captured through anti-DDK affinity column followed by conventional chromatography steps.

Protein Pathways Adherens junction, Arrhythmogenic right ventricular cardiomyopathy (ARVC), Focal adhesion, Leukocyte transendothelial migration, Regulation of actin cytoskeleton,

 Tel: 1-631-559-9269 1-516-512-3133

 Email: info@creative-biomart.com  Fax: 1-631-938-8127

 45-1 Ramsey Road, Shirley, NY 11967, USA



Systemic lupus erythematosus, Tight junction

Full Length Full L.

GENE INFORMATION

Gene Name ACTN2 actinin alpha 2 [Homo sapiens (human)]

Official Symbol ACTN2

Synonyms MPD6; CMH23; CMD1AA; MYOCOZ

Gene ID 88

mRNA Refseq NM_001103.4

Protein Refseq NP_001094.1

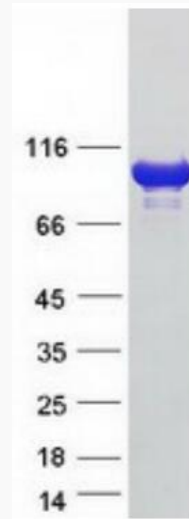
MIM 102573

UniProt ID P35609

 Tel: 1-631-559-9269 1-516-512-3133

 Email: info@creative-biomart.com  Fax: 1-631-938-8127

 45-1 Ramsey Road, Shirley, NY 11967, USA



Coomassie blue staining of purified ACTN2 protein.

Tel: 1-631-559-9269 1-516-512-3133

Email: info@creative-biomart.com Fax: 1-631-938-8127

45-1 Ramsey Road, Shirley, NY 11967, USA