

## Recombinant Human ACTR2 Protein, GST-tagged

Cat. No. ACTR2-236H Lot. No. (See product label)

### SPECIFICATION

<b>Product Overview</b>	Human ACTR2 full-length ORF ( AAH14546.1, 1 a.a. - 394 a.a.) recombinant protein with GST-tag at N-terminal.
<b>Species</b>	Human
<b>Source</b>	Wheat Germ
<b>Description</b>	The specific function of this gene has not yet been determined; however, the protein it encodes is known to be a major constituent of the ARP2/3 complex. This complex is located at the cell surface and is essential to cell shape and motility through lamellipodial actin assembly and protrusion. Two transcript variants encoding different isoforms have been found for this gene. [provided by RefSeq, Jul 2008]
<b>Molecular Mass</b>	69.08 kDa
<b>AA Sequence</b>	MDSQGRKVVVCDNGTGFVKCGYAGSNFPEHIFPALVGRPIIRSTTKVGNIEIKDLMV GDEASELRSTLEVNYPMENGIVRNWDDMKHLWDYTFGPEKLNIDTRNCKILLTEPP MNPTKNREKIVEVMFETYQFSGVYVAIQAVLTLYAQLLTGVVVDSGDGVTHICPVY ESFSLPHLTRRLDIAGRDI TRYLIKLLLLRGYAFNHSADFETVRMIKEKLCYVGYNIEQ EQKLALETTVLVESYTLPDGRIIKVGGERFEAPEALFQPHLINVEGVGVAELLFNTIQA ADIDTRSEFYKHIVLSSGSTMYPGLPSRLERELKQLYLERVLKGDVEKLSKFKIRIEDP PRRKHMVFLGGAVLADIMKDKDNFWMTRQEYQEKGVRVLEKLGVTVR
<b>Applications</b>	Enzyme-linked Immunoabsorbent Assay Western Blot (Recombinant protein)

 Tel: 1-631-559-9269 1-516-512-3133

 Email: [info@creative-biomart.com](mailto:info@creative-biomart.com)  Fax: 1-631-938-8127

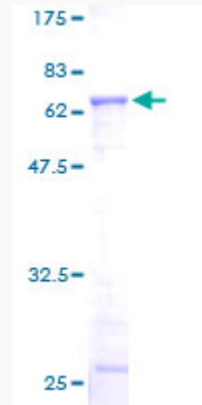
 45-1 Ramsey Road, Shirley, NY 11967, USA

	Antibody Production Protein Array
<b>Notes</b>	Best use within three months from the date of receipt of this protein.
<b>Storage</b>	Store at -80 centigrade. Aliquot to avoid repeated freezing and thawing.
<b>Storage Buffer</b>	50 mM Tris-HCl, 10 mM reduced Glutathione, pH=8.0 in the elution buffer.
<b>GENE INFORMATION</b>	
<b>Gene Name</b>	ACTR2 ARP2 actin-related protein 2 homolog (yeast) [ Homo sapiens ]
<b>Official Symbol</b>	ACTR2
<b>Synonyms</b>	ACTR2; ARP2 actin-related protein 2 homolog (yeast); ARP2 (actin related protein 2, yeast) homolog; actin-related protein 2; ARP2; actin-like protein 2;
<b>Gene ID</b>	10097
<b>mRNA Refseq</b>	NM_001005386
<b>Protein Refseq</b>	NP_001005386
<b>MIM</b>	604221
<b>UniProt ID</b>	P61160

 Tel: 1-631-559-9269 1-516-512-3133

 Email: [info@creative-biomart.com](mailto:info@creative-biomart.com)  Fax: 1-631-938-8127

 45-1 Ramsey Road, Shirley, NY 11967, USA



12.5% SDS-PAGE Stained with Coomassie Blue.

Tel: 1-631-559-9269 1-516-512-3133

Email: [info@creative-biomart.com](mailto:info@creative-biomart.com) Fax: 1-631-938-8127

45-1 Ramsey Road, Shirley, NY 11967, USA