

Recombinant Human ACTRT3 Protein, Myc/DDK-tagged, C13 and N15-labeled

Cat. No. ACTRT3-4279H **Lot. No.** (See product label)

SPECIFICATION

Product Overview	ARPM1 MS Standard C13 and N15-labeled recombinant protein (NP_115876) with a C-terminal MYC/DDK tag, was expressed in HEK293 cells.
Species	Human
Source	HEK293
Description	ACTRT3 (Actin Related Protein T3) is a Protein Coding gene. Diseases associated with ACTRT3 include Dyskeratosis Congenita, Autosomal Dominant 1 and Dyskeratosis Congenita Autosomal Dominant. An important paralog of this gene is ACTB.
Molecular Mass	40.9 kDa
AA Sequence	MNHCQLPVVIDNGSGMIKAGVAGCREPQFIYPNIIGRAKGQSRAAQGGLELCVGDQ AQDWRSSLFISYPVERGLITSCEDMEIMWKHIYDYNLKLKPCDGPVLITEPALNPLAN RQQITEMFFEHLGVPAFYMSIQAVLALFAAGFTTGLVLNSGAGVTQSVPIFEGYCLPH GVQQDLGLDLTNYLMVLMKNHGIMLLSASDRKIVEDIKESFCYVAMNYYEEEMAKK PDCLEKVYQLPDGKVIQLHDQLFSCPEALFSPCHMNLEAPGIDKICFSSIMKCDTGLR NSFFSNILAGGSTSFPGLDKRLVKDIKVAPANTAVQVIAPPERKISVWVGGSILASL SAFQDMWITAAEFKEVGNIVHQRCFTRTRPLEQKLISEEDLAANDILDYKDDDDKV
Purity	> 80% as determined by SDS-PAGE and Coomassie blue staining

 Tel: 1-631-559-9269 1-516-512-3133

 Email: info@creative-biomart.com  Fax: 1-631-938-8127

 45-1 Ramsey Road, Shirley, NY 11967, USA

Stability	Stable for 3 months from receipt of products under proper storage and handling conditions.
Storage	Store at -80 centigrade. Avoid repeated freeze-thaw cycles.
Concentration	50 µg/mL as determined by BCA
Storage Buffer	100 mM glycine, 25 mM Tris-HCl, pH 7.3.
GENE INFORMATION	
Gene Name	ACTRT3 actin related protein T3 [Homo sapiens (human)]
Official Symbol	ACTRT3
Synonyms	ACTRT3; actin related protein T3; ARPM1; ARP-T3; actin-related protein T3; actin-related protein M1
Gene ID	84517
mRNA Refseq	NM_032487
Protein Refseq	NP_115876
MIM	608534
UniProt ID	Q9BYD9

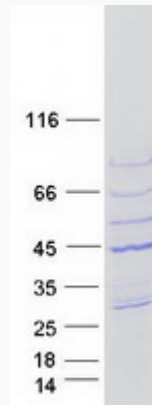
 Tel: 1-631-559-9269 1-516-512-3133

 Email: info@creative-biomart.com  Fax: 1-631-938-8127

 45-1 Ramsey Road, Shirley, NY 11967, USA



SDS-PAGE



Tel: 1-631-559-9269 1-516-512-3133

Email: info@creative-biomart.com Fax: 1-631-938-8127

45-1 Ramsey Road, Shirley, NY 11967, USA