

## Recombinant Human ACVR1 Protein, GST-tagged

Cat. No. ACVR1-247H Lot. No. (See product label)

### SPECIFICATION

<b>Product Overview</b>	Human ACVR1 full-length ORF ( AAH33867, 1 a.a. - 509 a.a.) recombinant protein with GST-tag at N-terminal.
<b>Species</b>	Human
<b>Source</b>	Wheat Germ
<b>Description</b>	<p>Activins are dimeric growth and differentiation factors which belong to the transforming growth factor-beta (TGF-beta) superfamily of structurally related signaling proteins. Activins signal through a heteromeric complex of receptor serine kinases which include at least two type I ( I and IB) and two type II (II and IIB) receptors. These receptors are all transmembrane proteins, composed of a ligand-binding extracellular domain with cysteine-rich region, a transmembrane domain, and a cytoplasmic domain with predicted serine/threonine specificity. Type I receptors are essential for signaling; and type II receptors are required for binding ligands and for expression of type I receptors. Type I and II receptors form a stable complex after ligand binding, resulting in phosphorylation of type I receptors by type II receptors. This gene encodes activin A type I receptor which signals a particular transcriptional response in concert with activin type II receptors. Mutations in this gene are associated with fibrodysplasia ossificans progressive. [provided by RefSeq, Jul 2008]</p>
<b>Molecular Mass</b>	81.73 kDa
<b>AA Sequence</b>	MVDGVMILPVLIMIALPSPSMEDEKPKVNPKLYMCVCEGLSCGNEDHCEGQQCFSS

 Tel: 1-631-559-9269 1-516-512-3133

 Email: [info@creative-biomart.com](mailto:info@creative-biomart.com)  Fax: 1-631-938-8127

 45-1 Ramsey Road, Shirley, NY 11967, USA

LSINDGFHVYQKGCQVVEYEQGKMTCKTPSPGQAVECCQGDWCNRNITAQLPTKG  
 KSFPQTQNFHLEVGLIILSVFVAVCLLACLLGVALRKFRRNQERLNPRDVEYGTIEG  
 LITTVGDSTLADLLDHSCTSGSGSGLPFLVQRTVARQITLLECVGKGRYGEVWRGS  
 WQGENVAVKIFSSRDEKSWFRETELYNTVMLRHENILGFIASDMTSRHSSTQLWLIT  
 HYHEMGSLYDYLLQTTLDTVSCLRIVLSIASGLAHLHIEIFGTQGKPAIAHRDLKSKNIL  
 VKKNGQCCIADLGLAVMHSQSTNQLDVGNNPRVGTKRYMAPEVLDETIQVDCFDSY  
 KRVDIWAFLVWEVARRMVSNGIVEDYKPPFYDVPNDPSFEDMRKVVCVDQQR  
 PNIPNRWFSDPTLTSLAKLMKECWYQNPSARLTALRIKKTTLTKIDNSLDKLTDC

**Applications**

Enzyme-linked Immunoabsorbent Assay  
 Western Blot (Recombinant protein)  
 Antibody Production  
 Protein Array

**Notes**

Best use within three months from the date of receipt of this protein.

**Storage**

Store at -80 centigrade. Aliquot to avoid repeated freezing and thawing.

**Storage Buffer**

50 mM Tris-HCl, 10 mM reduced Glutathione, pH=8.0 in the elution buffer.

## GENE INFORMATION

**Gene Name**

[ACVR1 activin A receptor, type I \[ Homo sapiens \]](#)

**Official Symbol**

[ACVR1](#)

**Synonyms**

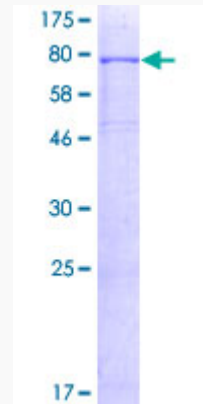
ACVR1; activin A receptor, type I; ACVRLK2; activin receptor type-1; ACVR1A; ALK2;  
 SKR1; activin receptor type I; hydroxyalkyl-protein kinase; activin receptor-like kinase  
 2; TGF-B superfamily receptor type I; activin A receptor, type II-like kinase 2;  
 serine/threonine-protein kinase receptor R1; FOP; TSRI; ACTRI;

 Tel: 1-631-559-9269 1-516-512-3133

 Email: [info@creative-biomart.com](mailto:info@creative-biomart.com)  Fax: 1-631-938-8127

 45-1 Ramsey Road, Shirley, NY 11967, USA

Gene ID	90
mRNA Refseq	NM_001105
Protein Refseq	NP_001096
MIM	102576
UniProt ID	Q04771



12.5% SDS-PAGE Stained with Coomassie Blue.

 Tel: 1-631-559-9269 1-516-512-3133

 Email: [info@creative-biomart.com](mailto:info@creative-biomart.com)  Fax: 1-631-938-8127

 45-1 Ramsey Road, Shirley, NY 11967, USA