

# Recombinant Human Activin A Receptor, Type IB, GST-tagged, Active

**Cat. No.** ACVR1B-240H    **Lot. No.** (See product label)

## SPECIFICATION

<b>Product Overview</b>	Recombinant human ALK4 (150-end) was expressed by baculovirus in <i>Sf9 insect cell</i> using a N-terminal GST tag. MW = 64 KDa.
<b>Species</b>	Human
<b>Source</b>	Sf9 Cells
<b>Protein Length</b>	150-end a.a.
<b>Description</b>	ALK4 is a member of the subfamily of receptor ser/thr kinases that mediates signaling by the Activins. ALK4 is expressed in many human tissues, including kidney, pancreas, brain, lung, and liver. Truncated ALK4, predominantly expressed in human pituitary adenomas, function as dominant negative receptors to interfere with wild-type receptor function and blocks the antiproliferative effect of activin possibly contributing to development of human pituitary tumors. ALK4 is able to mediate Nodal signaling in the presence of Cripto during vertebrate development.
<b>Sequence</b>	150-end.
<b>Applications</b>	Kinase Assay, Western Blot.
<b>Storage And Stability</b>	Store product at $-70^{\circ}\text{C}$ . For optimal storage, aliquot target into smaller quantities after centrifugation and store at recommended temperature. For most favorable performance, avoid repeated handling and multiple freeze/thaw cycles.

 Tel: 1-631-559-9269    1-516-512-3133

 Email: [info@creative-biomart.com](mailto:info@creative-biomart.com)     Fax: 1-631-938-8127

 45-1 Ramsey Road, Shirley, NY 11967, USA

## GENE INFORMATION

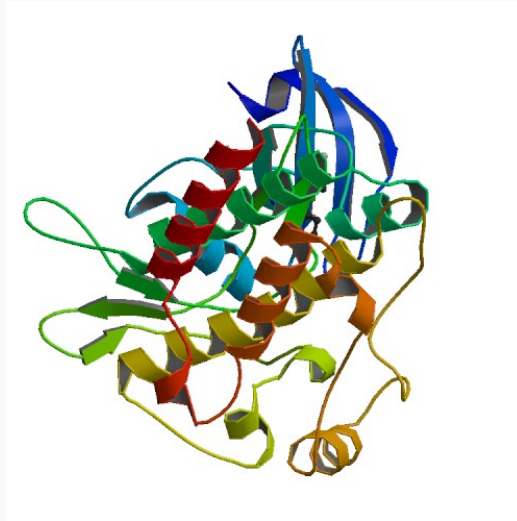
<b>Gene Name</b>	ACVR1B activin A receptor, type IB [ Homo sapiens ]
<b>Synonyms</b>	activin A receptor, type IB; ALK4; SKR2; ACTRIB; ACVRLK4; ACVR1B; activin receptor-like kinase 4; activin A receptor, type II-like kinase 4; serine(threonine) protein kinase receptor R2; ACTR-IB; ALK-4; ActRIB; EC 2.7.11.30; Activin receptor-like kinase 4; Serine/threonine-protein kinase receptor R2; activin A type IB receptor
<b>Gene ID</b>	91
<b>mRNA Refseq</b>	NM_004302
<b>Protein Refseq</b>	NP_004293
<b>MIM</b>	601300
<b>UniProt ID</b>	P36896
<b>Chromosome Location</b>	12q13
<b>Pathway</b>	Adherens junction; Chronic myeloid leukemia; Colorectal cancer; Cytokine-cytokine receptor interaction; Endocytosis; MAPK signaling pathway; Pancreatic cancer; Pathways in cancer; TGF-beta signaling pathway
<b>Function</b>	ATP binding; SMAD binding; activin binding; activin receptor activity, type I; growth factor binding; magnesium ion binding; manganese ion binding; nucleotide binding; protein serine/threonine kinase activity; receptor activity; transferase activity; ubiquitin protein ligase binding

 Tel: 1-631-559-9269 1-516-512-3133

 Email: [info@creative-biomart.com](mailto:info@creative-biomart.com)  Fax: 1-631-938-8127

 45-1 Ramsey Road, Shirley, NY 11967, USA

PDB rendering based  
on 1rw8.



 Tel: 1-631-559-9269 1-516-512-3133

 Email: [info@creative-biomart.com](mailto:info@creative-biomart.com)  Fax: 1-631-938-8127

 45-1 Ramsey Road, Shirley, NY 11967, USA