

## Active Recombinant Human ACVR1B Protein, GST-tagged

Cat. No. ACVR1B-249H Lot. No. (See product label)

### SPECIFICATION

<b>Product Overview</b>	Human ACVR1B (NP_004293.1, 150 a.a. - 505 a.a.) partial recombinant protein with GST tag expressed in baculovirus infected Sf21 cells.
<b>Species</b>	Human
<b>Source</b>	Insect Cells
<b>ProteinLength</b>	150-505 a.a.
<b>Description</b>	This gene encodes an activin A type IB receptor. Activins are dimeric growth and differentiation factors which belong to the transforming growth factor-beta (TGF-beta) superfamily of structurally related signaling proteins. Activins signal through a heteromeric complex of receptor serine kinases which include at least two type I and two type II receptors. This protein is a type I receptor which is essential for signaling. Mutations in this gene are associated with pituitary tumors. Alternate splicing results in multiple transcript variants.[provided by RefSeq, Jun 2010]
<b>Form</b>	Liquid
<b>Bio-activity</b>	The activity was measured by off-chip mobility shift assay. The enzyme was incubated with fluorescence-labeled substrate and Mg(or Mn)/ATP. The phosphorylated and unphosphorylated substrates were separated and detected by LabChip 3000. Substrate: Topolla peptide. ATP: 100 uM.
<b>Molecular Mass</b>	68 kDa

 Tel: 1-631-559-9269 1-516-512-3133

 Email: [info@creative-biomart.com](mailto:info@creative-biomart.com)  Fax: 1-631-938-8127

 45-1 Ramsey Road, Shirley, NY 11967, USA

<b>Purity</b>	76 % by SDS-PAGE/CBB staining
<b>Applications</b>	Functional Study SDS-PAGE
<b>Storage</b>	Store at -80 centigrade. Aliquot to avoid repeated freezing and thawing.
<b>Storage Buffer</b>	In 50 mM Tris-HCl, 150 mM NaCl, pH 7.5 (0.1% CHAPS, 1 mM DTT, 10% glycerol)

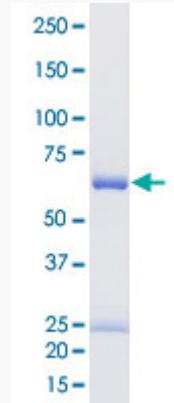
## GENE INFORMATION

<b>Gene Name</b>	<a href="#">ACVR1B activin A receptor, type IB [ Homo sapiens ]</a>
<b>Official Symbol</b>	<a href="#">ACVR1B</a>
<b>Synonyms</b>	ACVR1B; activin A receptor, type IB; ACVRLK4; activin receptor type-1B; ActRIB; ALK4; SKR2; activin receptor-like kinase 4; activin A receptor, type II-like kinase 4; serine/threonine-protein kinase receptor R2; ACTRIB;
<b>Gene ID</b>	<a href="#">91</a>
<b>mRNA Refseq</b>	<a href="#">NM_004302</a>
<b>Protein Refseq</b>	<a href="#">NP_004293</a>
<b>MIM</b>	<a href="#">601300</a>
<b>UniProt ID</b>	<a href="#">P36896</a>

 Tel: 1-631-559-9269 1-516-512-3133

 Email: [info@creative-biomart.com](mailto:info@creative-biomart.com)  Fax: 1-631-938-8127

 45-1 Ramsey Road, Shirley, NY 11967, USA



Loading 1 ug protein in SDS-PAGE

**Result of activity  
analysis**

 Tel: 1-631-559-9269 1-516-512-3133

 Email: [info@creative-biomart.com](mailto:info@creative-biomart.com)  Fax: 1-631-938-8127

 45-1 Ramsey Road, Shirley, NY 11967, USA