

Active Recombinant Human ACVR1B, Fc-His-tagged

Cat. No. ACVR1B-560H **Lot. No.** (See product label)

SPECIFICATION

Product Overview	Active Recombinant Human ACVR1B(NP_004293.1)(Met 1-Glu 126) was expressed in HEK293, fused with C-terminal His-tagged Fc region of human IgG1 at the C-terminus.
Species	Human
Source	HEK293
ProteinLength	1-126 aa
Form	Lyophilized from sterile PBS, pH 7.4.
Bio-activity	Measured by its binding ability in a functional ELISA. Immobilized human TDGF1 at 2 µg/ml (100 µl/well) can bind human ALK-4 with a linear range of 0.0068-0.16 µg/ml.
Molecular Mass	The recombinant human ALK4/Fc is a disulfide-linked homodimer. The reduced monomer consists of 351 amino acids and has a predicted molecular mass of 39.6 kDa. In SDS-PAGE under reducing conditions, rhALK4/Fc monomer migrates as an approximately 46 kDa band due to glycosylation, with ~15% free Fc fragment.
Endotoxin	< 1.0 EU per µg protein as determined by the LAL method.
Purity	> 80 % as determined by SDS-PAGE
Storage	Store it under sterile conditions at -20°C to -80°C upon receiving. Recommend to

 Tel: 1-631-559-9269 1-516-512-3133

 Email: info@creative-biomart.com  Fax: 1-631-938-8127

 45-1 Ramsey Road, Shirley, NY 11967, USA

aliquot the protein into smaller quantities for optimal storage. Avoid repeated freeze-thaw cycles.

Reconstitution

It is recommended that sterile water be added to the vial to prepare a stock solution of 0.2 ug/ul. Centrifuge the vial at 4°C before opening to recover the entire contents.

GENE INFORMATION

Gene Name [ACVR1B activin A receptor, type IB \[Homo sapiens \]](#)

Official Symbol [ACVR1B](#)

Synonyms

ACVR1B; activin A receptor, type IB; ACVRLK4; activin receptor type-1B; ActRIB; ALK4; SKR2; activin receptor-like kinase 4; activin A receptor, type II-like kinase 4; serine/threonine-protein kinase receptor R2; ACTRIB;

Gene ID [91](#)

mRNA Refseq [NM_004302](#)

Protein Refseq [NP_004293](#)

MIM [601300](#)

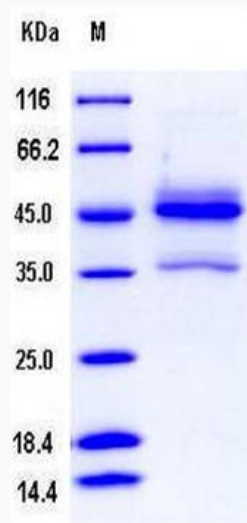
UniProt ID [P36896](#)

 Tel: 1-631-559-9269 1-516-512-3133

 Email: info@creative-biomart.com  Fax: 1-631-938-8127

 45-1 Ramsey Road, Shirley, NY 11967, USA

SDS-PAGE



 Tel: 1-631-559-9269 1-516-512-3133

 Email: info@creative-biomart.com  Fax: 1-631-938-8127

 45-1 Ramsey Road, Shirley, NY 11967, USA