

Active Recombinant Human ACVR1C Protein, GST-tagged

Cat. No. ACVR1C-6903H **Lot. No.** (See product label)

SPECIFICATION

Product Overview	Active Recombinant Human ACVR1C Protein, GST-tagged was expressed in baculovirus expression system.
Species	Human
Source	Insect cells
ProteinLength	139-493 aa
Description	Cytoplasmic domain of human ACVR1C [139-493(end) amino acids of accession number NP_660302.2] was expressed as N-terminal GST-fusion protein(67 kDa) using baculovirus expression system. GSTACVR1C was purified by using glutathione sepharose chromatography.
Tag	N-GST
Molecular Mass	67 kDa
Purity	61 % by SDS-PAGE/CBB staining
Handling	Avoid repeating freeze-thaws.
Storage	Store at -80 °C.
Storage Buffer	50 mM Tris-HCl, 150 mM NaCl, 0.05% Brij35, 1 mM DTT, 10% glycerol, pH7.5

 Tel: 1-631-559-9269 1-516-512-3133

 Email: info@creative-biomart.com  Fax: 1-631-938-8127

 45-1 Ramsey Road, Shirley, NY 11967, USA

References

Kim, Byung-Chul et al. "Activin receptor-like kinase-7 induces apoptosis through activation of MAPKs in a Smad3-dependent mechanism in hepatoma cells." The Journal of biological chemistry vol. 279,27 (2004): 28458-65.

GENE INFORMATION

Gene Name [ACVR1C activin A receptor type 1C \[Homo sapiens \(human\) \]](#)

Official Symbol [ACVR1C](#)

Synonyms [ACVR1C](#), [ACVRLK7](#), [ALK7](#)

Gene ID [130399](#)

mRNA Refseq [NM_145259](#)

Protein Refseq [NP_660302.2](#)

MIM [608981](#)

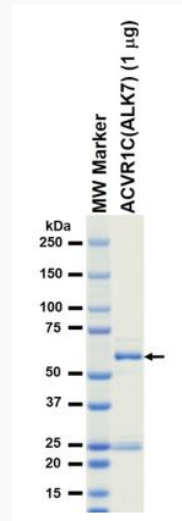
UniProt ID [Q8NER5](#)

 Tel: 1-631-559-9269 1-516-512-3133

 Email: info@creative-biomart.com  Fax: 1-631-938-8127

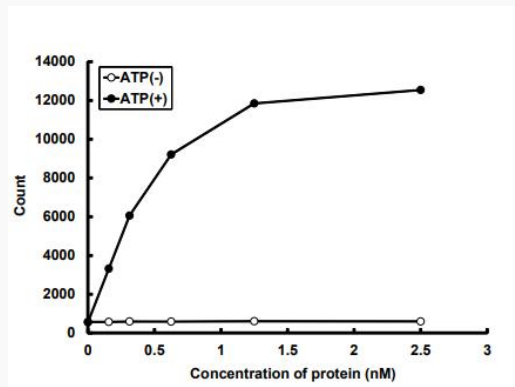
 45-1 Ramsey Road, Shirley, NY 11967, USA

The purity was assessed by SDS-PAGE/CBB staining.



Purity: 61 %

The activity was determined by TR-FRET assay. The enzyme was incubated with ULight-labeled peptide and Mn/ATP. Phosphorylation was detected by Eu-labeled anti-phospho antibody.



Substrate : Topoa peptide

ATP : 100 µM

Tel: 1-631-559-9269 1-516-512-3133

Email: info@creative-biomart.com Fax: 1-631-938-8127

45-1 Ramsey Road, Shirley, NY 11967, USA