

Active Recombinant Human ACVR2A protein, hFc-tagged

Cat. No. ACVR2A-195H Lot. No. (See product label)

SPECIFICATION

Product Overview	Active Recombinant Human ACVR2A protein(Met 1-Pro 134)(NP_001607.1) was expressed in HEK293, fused with the Fc region of human IgG1 at the C-terminus.
Species	Human
Source	HEK293
ProteinLength	1-134 aa
Form	Lyophilized from sterile PBS, pH 7.4.
Bio-activity	Measured by its ability to neutralize Activin-mediated inhibition on MPC11 cell proliferation. The ED50 for this effect is typically 10-40 ng/mL in the presence of 10 ng/mL recombinant Activin A.
Molecular Mass	The recombinant human ACVR2A/Fc chimera is a disulfide-linked homodimer protein generated after removal of the signal peptide. The monomer comprises 352 amino acids and predicts a molecular mass of 40.0 kDa. As a result of glycosylation, the monomer migrates as an approximately 60-65 kDa protein in SDS-PAGE under reducing conditions.
Endotoxin	< 1 EU/g as determined by LAL test.
Purity	> 97 % as determined by SDS-PAGE

 Tel: 1-631-559-9269 1-516-512-3133

 Email: info@creative-biomart.com  Fax: 1-631-938-8127

 45-1 Ramsey Road, Shirley, NY 11967, USA

Storage Store it under sterile conditions at -20°C to -80°C upon receiving. Recommend to aliquot the protein into smaller quantities for optimal storage. Avoid repeated freeze-thaw cycles.

Reconstitution It is recommended that sterile water be added to the vial to prepare a stock solution of 0.2 ug/ul. Centrifuge the vial at 4°C before opening to recover the entire contents.

GENE INFORMATION

Gene Name ACVR2A activin A receptor, type IIA [Homo sapiens]

Official Symbol ACVR2A

Synonyms ACVR2A; activin A receptor, type IIA; activin A receptor, type II , ACVR2; activin receptor type-2A; ACTRII; ACVR2;

Gene ID 92

mRNA Refseq NM_001616

Protein Refseq NP_001607

MIM 102581

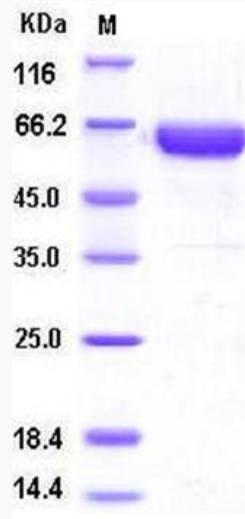
UniProt ID P27037

 Tel: 1-631-559-9269 1-516-512-3133

 Email: info@creative-biomart.com  Fax: 1-631-938-8127

 45-1 Ramsey Road, Shirley, NY 11967, USA

SDS-PAGE



 Tel: 1-631-559-9269 1-516-512-3133

 Email: info@creative-biomart.com  Fax: 1-631-938-8127

 45-1 Ramsey Road, Shirley, NY 11967, USA